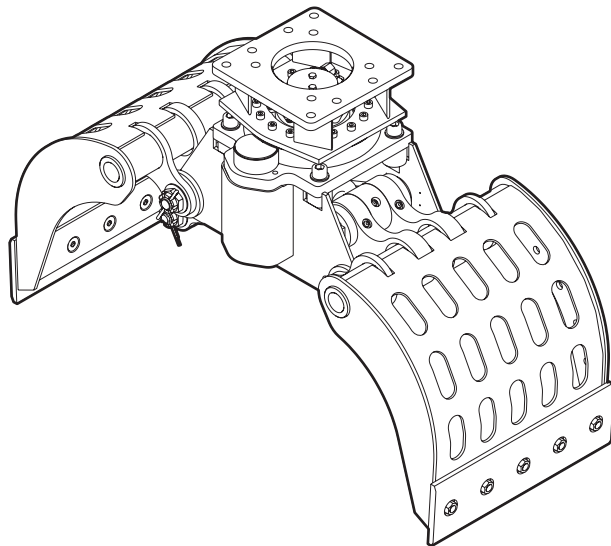


MG 300

Spare parts list

Multi grapple

MG 300 s/n DEQ176000 -



General information

This spare parts list applies to the following:

Part number	Description
1826101763	Multi grapple MG 300

Use only authorized parts. Any damage or malfunction caused by the use of unauthorized parts is not covered by Warranty or Product Liability. Any unauthorized use or copying of the contents or any part thereof is prohibited. This applies in particular to trademarks, model denominations, part numbers, and drawings.

Instructions for use

This spare parts list contains no safety regulations and is merely intended to assist in the ordering of spare parts.

For information about operating, servicing, or repairing, the relevant Safety and operating instructions must be consulted at all costs.

Please observe the safety instructions listed in the relevant Safety and operating instructions!

Instructions for ordering

It is essential to indicate the serial number of the hydraulic attachment when ordering spare parts!

Please note the full identification number of your hydraulic attachment.

Determine the quantity of individual parts which are required and need to be ordered. The order must indicate the following details:

- full identification code of the hydraulic attachment
- required quantity
- part number
- description

Service, repair and wear part kits

Kit list 1

Mechanical

Multi grapple 3

Tightening torques 6

Dimensions 9

Options / accessories

Hydraulic hoses 10

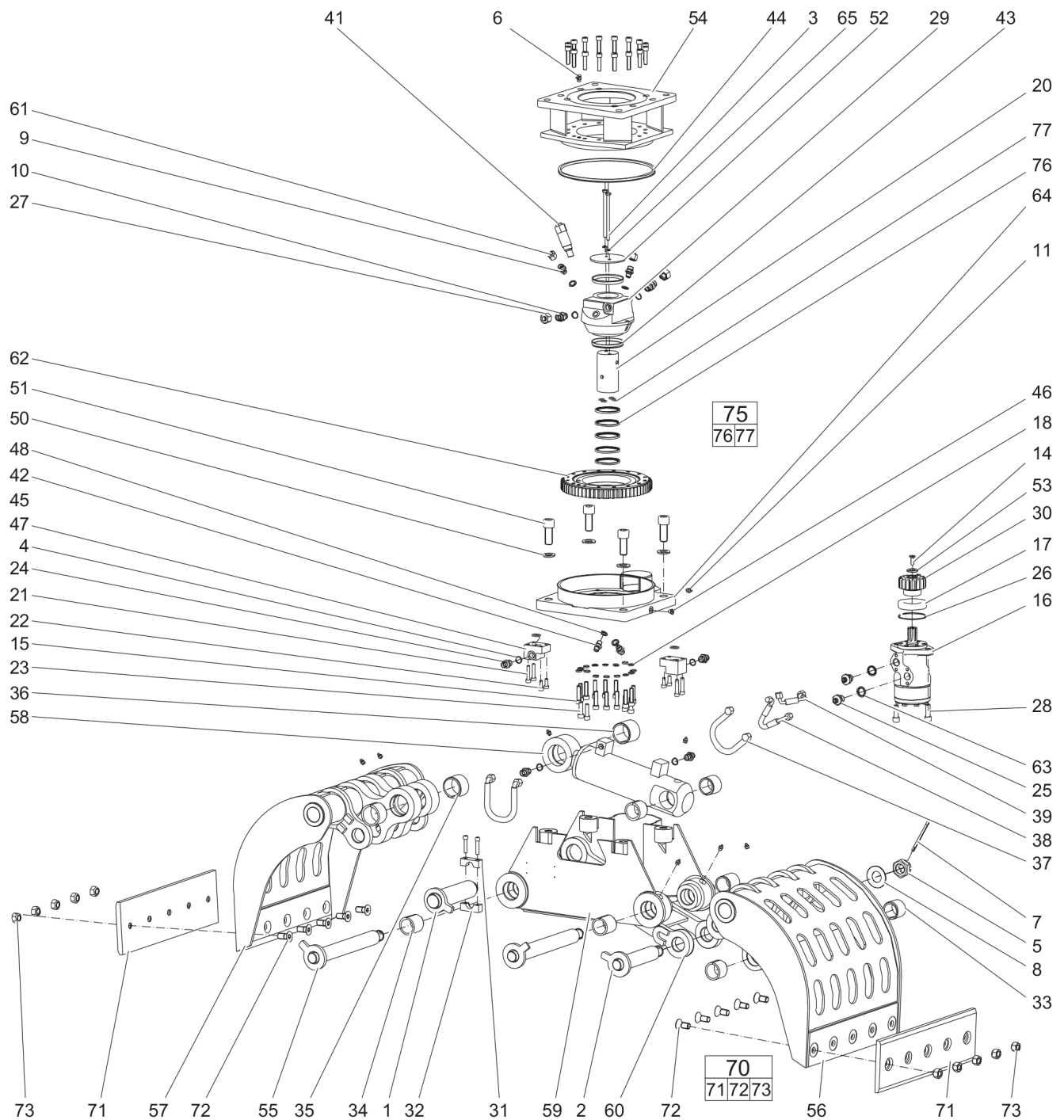
Optional equipment 13

Service, repair and wear part kits Kit list

NO EXPLODED VIEW
AVAILABLE
FOR THIS BOM

Item	Part No.	Name	Qty	L
KIT	3363106250	Label kit	1	
70(71-73)	3372100008	Blade kit	1	
71		Blade	2	
72	5730015481	Allen screw, M16 x 35 mm 10.9	10	
73	5730007580	Hexagon nut, M16 A2K	10	
KIT	3376679155	Seal kit (hydraulic cylinder)	1	
75(76-77)	3376678152	Seal kit (rotary transmission)	1	
76		Seal	5	
77		O-RING	4	
KIT	3376678151	Seal kit (Hydraulic motor)	1	

Mechanical Multi grapple



Refer to the DocMine web page for most up-to-date information. The printed information might be outdated.

Mon Sep 23 07:44:13 UTC 2019

Item	Part No.	Name	Qty	L
1	3376680051	Bolt	1	
2	3376680049	Bolt	1	
3	0147111067	Hexagon head screw, M8 x 130 mm 10.9	2	
4	3377016375	Seal ring - Bounded seal - Oil outlet 3/8 USS	6	
5	3376100911	Castle nut	3	
6	3376100738	Grease nipple	1	
7	5730015908	Spring dowel sleeve 6.3 x 80 mm	3	
8	3376100927	Spring ring	3	
9	3376100921	Fitting	2	
10	3360478333	Fitting	2	
11	3360209834	Grease nipple	10	
14	4700513013	Screw	1	
15	4700508045	Screw	28	
16	3376100930	Hydraulic motor	1	
17	4700000115	Ball bearing	1	
18	4700186038	Locking washer, Nord-Lock	16	
20	3363123969	Rotor	1	
21	3372005028	Screw	6	
22	3371820721	Screw	4	
23	3363070895	Allen screw	4	
24	3376100924	Fitting	4	
25	3376100923	Fitting	2	
26	3376100863	Snap ring	1	
27	3376100873	Plug	2	
28	0211140200	Cap screw	2	
29	3363123766	Stator	1	
30	3376679061	Pinion	1	
31	3376681070	Clamp	1	
32	3376681071	Clamp	1	
33	3362328008	Bearing bush	4	
34	3376100909	Bearing bush	4	
35	3361031986	Bearing bush	2	
36	3376100846	Bearing bush	1	
37	3376100934	Hydraulic hose	2	
38	3376100933	Hydraulic hose	1	
39	3376100932	Hydraulic hose	1	
41	3376100916	Pressure valve	1	

Refer to the DocMine web page for most up-to-date information. The printed information might be outdated.

Mon Sep 23 07:44:13 UTC 2019

Item	Part No.	Name	Qty	L
42	3376545201	Fitting	2	
43	3376100914	V-ring	2	
44	3376100956	Seal	1	
45	3376100891	O-ring	2	
46	3371817740	Plug	1	
47	3376679042	Connection block	2	
48	3377016129	Bounded seal	4	
50	0300027413	Plain Washer	4	
51	3363094902	Allen screw	4	
52	3363123772	Cover	1	
53	3376678081	Washer	1	
54	3376679001	Upper part	1	
55	3376680046	Bolt	2	
56	3376679030	Grapple leaf (left)	1	
57	3376679056	Grapple leaf (right)	1	
58	3376679062	Hydraulic cylinder	1	
59	3376679012	Housing	1	
60	3376679025	Linkage	1	
61	3376100922	Plug	2	
62	3376100931	Live ring	1	
63	3371805714	U-seal ring 1/2	2	
64	3376679079	Live ring base	1	
65	3315019504	LOCK WASHER	2	
70(71-73)	3372100008	Blade kit	1	
71		Blade	2	
72	5730015481	Allen screw, M16 x 35 mm 10.9	10	
73	5730007580	Hexagon nut, M16 A2K	10	
75(76-77)	3376678152	Seal kit (rotary transmission)	1	
76		Seal	5	
77		O-RING	4	

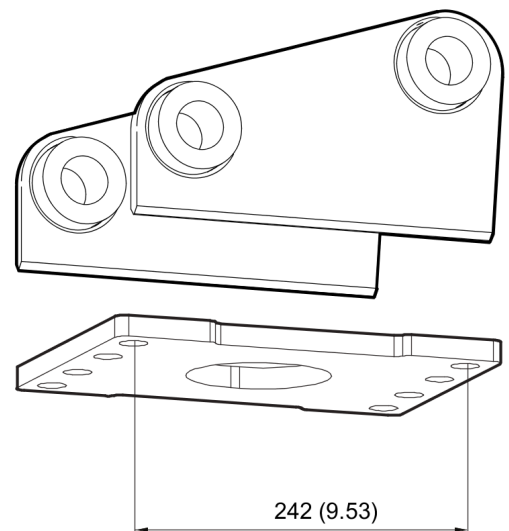
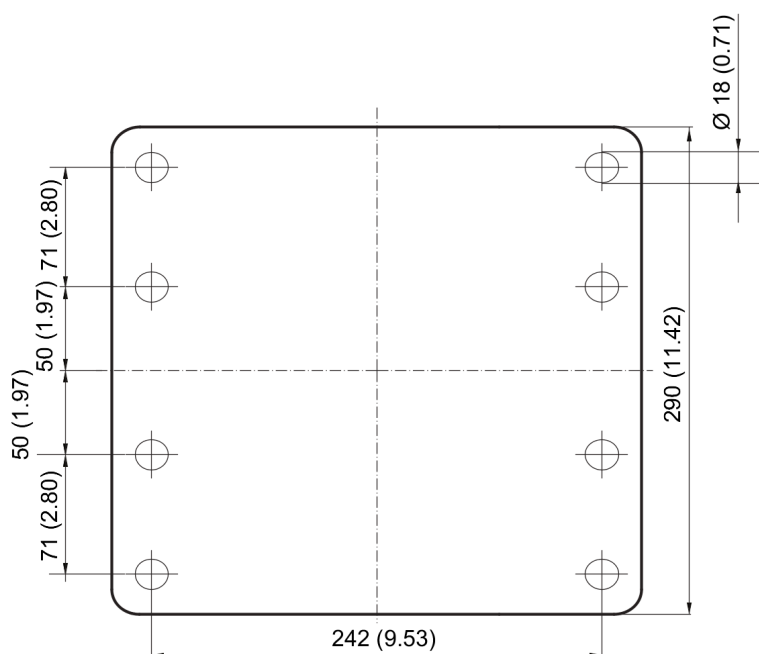
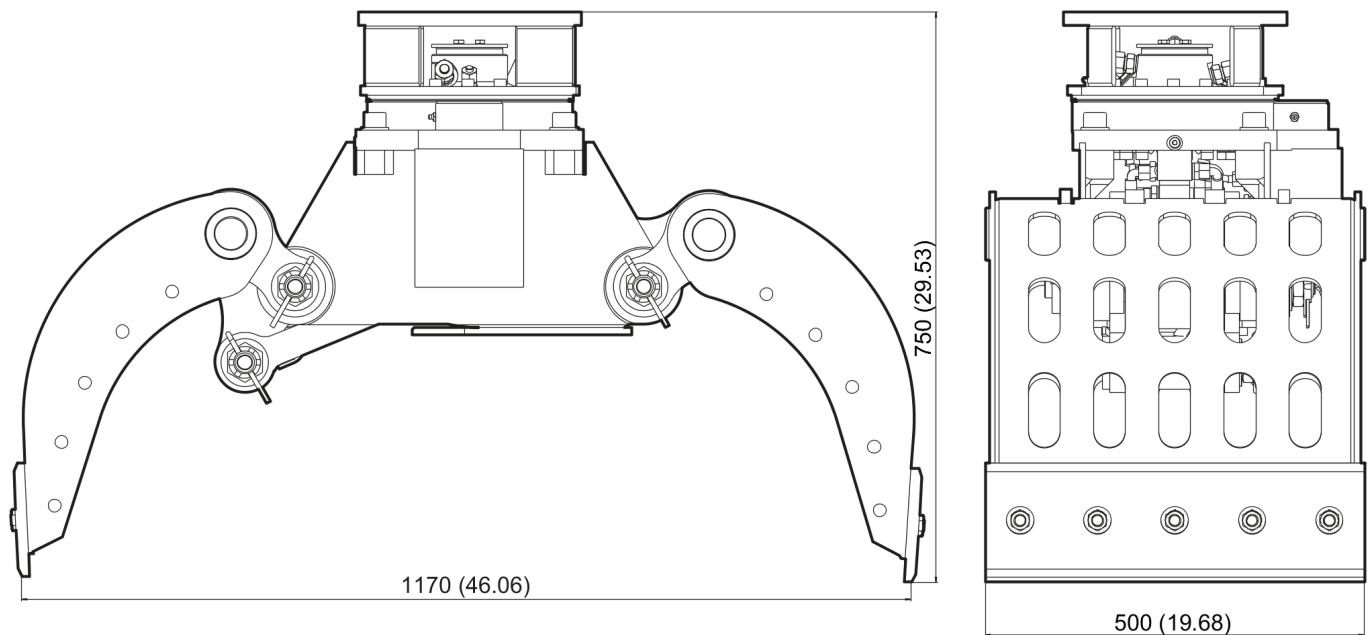
This page intentionally left blank

Mechanical Tightening torques

NO EXPLODED VIEW
AVAILABLE
FOR THIS BOM

Item	Part No.	Name	Qty	L
Not Shown	-	Bolt size: M8, property class: 10.9 - 40 Nm (30 ft lbf)	-	
Not Shown	-	Bolt size: M10, property class: 10.9 - 80 Nm (59 ft lbf)	-	
Not Shown	-	Bolt size: M12, property class: 10.9 - 130 Nm (96 ft lbf)	-	
Not Shown	-	Bolt size: M12 x 1.25, property class: 10.9 - 110 Nm (81 ft lbf)	-	A
Not Shown	-	Bolt size: M14, property class: 10.9 - 200 Nm (148 ft lbf)	-	
Not Shown	-	Bolt size: M16, property class: 10.9 - 300 Nm (221 ft lbf)	-	
Not Shown	-	Bolt size: M20, property class: 10.9 - 600 Nm (443 ft lbf)	-	
Not Shown	-	Bolt size: M24, property class: 10.9 - 1000 Nm (738 ft lbf)	-	
Not Shown	-	Bolt size: M27, property class: 10.9 - 1500 Nm (1106 ft lbf)	-	
Not Shown	-	Bolt size: M30, property class: 10.9 - 2000 Nm (1475 ft lbf)	-	
Not Shown	-	Bolt size: M36, property class: 10.9 - 3600 Nm (2655 ft lbf)	-	
Not Shown	-	Bolt size: M39, property class: 10.9 - 4600 Nm (3393 ft lbf)	-	

Mechanical Dimensions



Refer to the DocMine web page for most up-to-date information. The printed information might be outdated.

Mon Sep 23 07:44:14 UTC 2019

This page intentionally left blank

Options / accessories Hydraulic hoses

NO EXPLODED VIEW
AVAILABLE
FOR THIS BOM

Item	Part No.	Name	Qty	L
Not Shown	-	Open - Close		
-	3363094540	Hydraulic Hose, I.D. 10 (3/8 in.) both ends M20 x 1.5, conical seal 24°, length 2000 mm (78.4 in.)	2	
Not Shown	-	Rotation		
-	3363094541	Hydraulic hose, I.D. 8 both ends M16 x 1.5, conical seal 24°, length 2000 mm (78.74 in.)	2	

Options / accessories Optional equipment

NO EXPLODED VIEW
AVAILABLE
FOR THIS BOM

Item	Part No.	Name	Qty	L
-	3363094914	Cutter grease cartridge, 12 x 400 g (0.88 lbs)	1	
-	0909107100	LUBRICAT.GUN	1	
-		Adapter plate matching the carrier. Consult the authorized Customer Center/Dealer in your area.	1	
-	3315304300	Base plate with through borings	1	
-	3315296490	Bolt kit	1	
-	3360430655	Open end spanner (24/27 mm)	1	

Any unauthorized use or copying of the contents or any part thereof is prohibited.
This applies in particular to trademarks, model denominations, part numbers, and drawings.