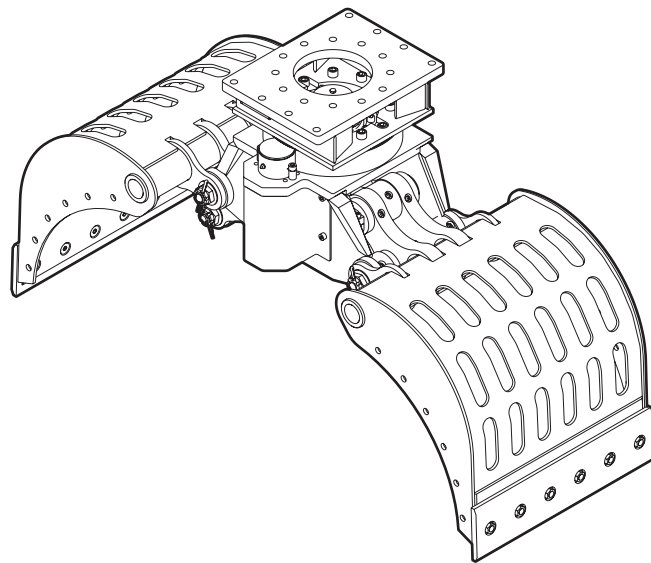


MG 400

Spare parts list

Multi grapple

MG 400 s/n DEQ176000 -



General information

This spare parts list applies to the following:

Part number	Description
1826101764	Multi grapple MG 400

Use only authorized parts. Any damage or malfunction caused by the use of unauthorized parts is not covered by Warranty or Product Liability. Any unauthorized use or copying of the contents or any part thereof is prohibited. This applies in particular to trademarks, model denominations, part numbers, and drawings.

Instructions for use

This spare parts list contains no safety regulations and is merely intended to assist in the ordering of spare parts.

For information about operating, servicing, or repairing, the relevant Safety and operating instructions must be consulted at all costs.

Please observe the safety instructions listed in the relevant Safety and operating instructions!

Instructions for ordering

It is essential to indicate the serial number of the hydraulic attachment when ordering spare parts!

Please note the full identification number of your hydraulic attachment.

Determine the quantity of individual parts which are required and need to be ordered. The order must indicate the following details:

- full identification code of the hydraulic attachment
- required quantity
- part number
- description

Service, repair and wear part kits

Kit list 1

Mechanical

Multi grapple 3

Tightening torques 6

Dimensions 9

Options / accessories

Hydraulic ports, hydraulic hoses 10

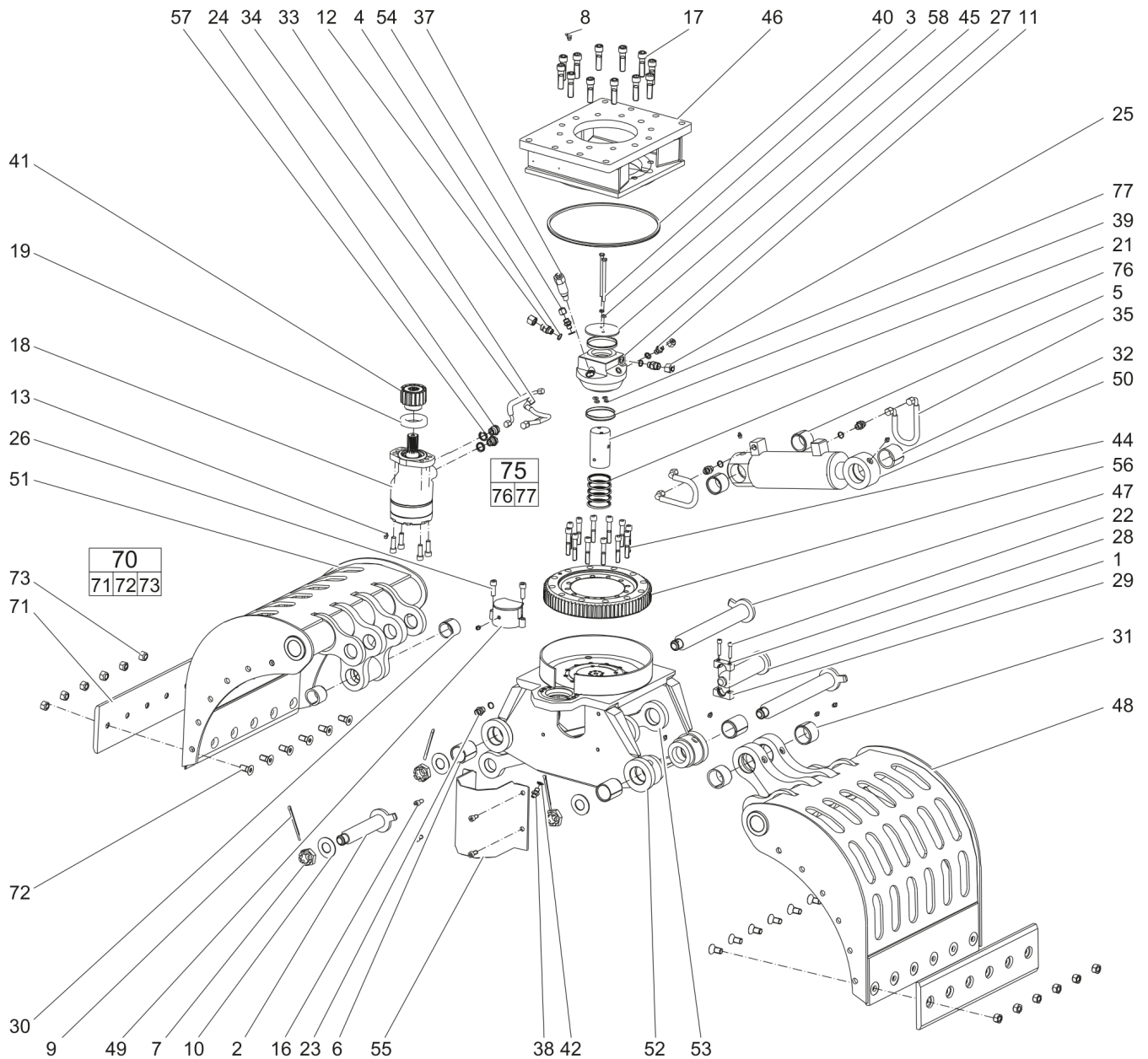
Optional equipment 13

Service, repair and wear part kits Kit list

NO EXPLODED VIEW
AVAILABLE
FOR THIS BOM

Item	Part No.	Name	Qty	L
KIT	3363106251	Label kit	1	
70(71-73)	3372100009	Blade kit	1	
71		Blade	2	
72	5730015481	Allen screw, M16 x 35 mm 10.9	12	
73	5730007580	Hexagon nut, M16 A2K	12	
KIT	3376680158	Seal kit (Hydraulic cylinder)	1	
75(76-77)	3376678152	Seal kit (rotary transmission)	1	
76		Seal	5	
77		O-RING	4	
KIT	3376680159	Seal kit (Hydraulic motor)	1	

Mechanical Multi grapple



Item	Part No.	Name	Qty	L
1	3376680051	Bolt	1	
2	3376680049	Bolt	1	
3	0147111067	Hexagon head screw, M8 x 130 mm 10.9	2	
4	3377016375	Seal ring - Bounded seal - Oil outlet 3/8 USS	6	
5	3363123935	Bearing bush	2	
6	3376100925	Bearing bush	4	
7	3376100911	Castle nut	3	
8	3376100738	Grease nipple	1	
9	5730015908	Spring dowel sleeve 6.3 x 80 mm	3	
10	3376100927	Spring ring	3	
11	3376100921	Fitting	2	
12	3360478333	Fitting	2	
13	3360209834	Grease nipple	10	
14	5730007580	Hexagon nut, M16 A2K	12	
15	5730015481	Allen screw, M16 x 35 mm 10.9	12	
16	3360103744	Screw, M10x20H	4	
17	3376100929	Allen screw	12	
18	3376100910	Hydraulic motor	1	
19	4700000115	Ball bearing	1	
21	3363123969	Rotor	1	
22	3372005028	Screw	2	
23	3376100924	Fitting	4	
24	3376100923	Fitting	2	
25	3376100873	Plug	2	
26	0211140200	Cap screw	6	
27	3363123766	Stator	1	
28	3376681070	Clamp	1	
29	3376681071	Clamp	1	
30	3362328008	Bearing bush	2	
31	3361031986	Bearing bush	2	
32	3363123260	Bearing bush	1	
33	3376100917	Hydraulic hose	1	
34	3376100918	Hydraulic hose	1	
35	3376100919	Hydraulic hose	2	
37	3376100916	Pressure valve	1	
38	3376545201	Fitting	2	
39	3376100914	V-ring	2	

Refer to the DocMine web page for most up-to-date information. The printed information might be outdated.

Mon Sep 23 07:58:18 UTC 2019

Item	Part No.	Name	Qty	L
40	3376100936	Seal	1	
41	3376682061	Pinion	1	
42	3377016129	Bounded seal	4	
44	3362328043	Allen screw	12	
45	3363123772	Cover	1	
46	3376681001	Upper part	1	
47	3376681046	Bolt	2	
48	3376680056	Grapple leaf (right)	1	
49	3376681072	Cover	1	
50	3376681062	Hydraulic cylinder	1	
51	3376680030	Grapple leaf (left)	1	
52	3376681012	Housing	1	
53	3376681025	Linkage	1	
54	3376100922	Plug	2	
55	3376681066	Cover	1	
56	3376100928	Live ring	1	
57	3371805714	U-seal ring 1/2	2	
58	3315019504	LOCK WASHER	2	
70(71-73)	3372100009	Blade kit	1	
71		Blade	2	
72	5730015481	Allen screw, M16 x 35 mm 10.9	12	
73	5730007580	Hexagon nut, M16 A2K	12	
75(76-77)	3376678152	Seal kit (rotary transmission)	1	
76		Seal	5	
77		O-RING	4	

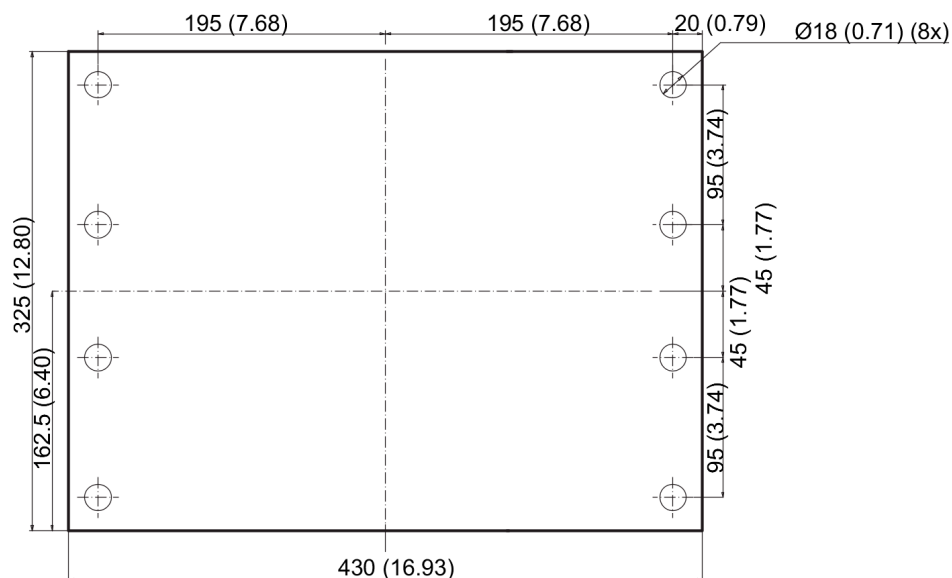
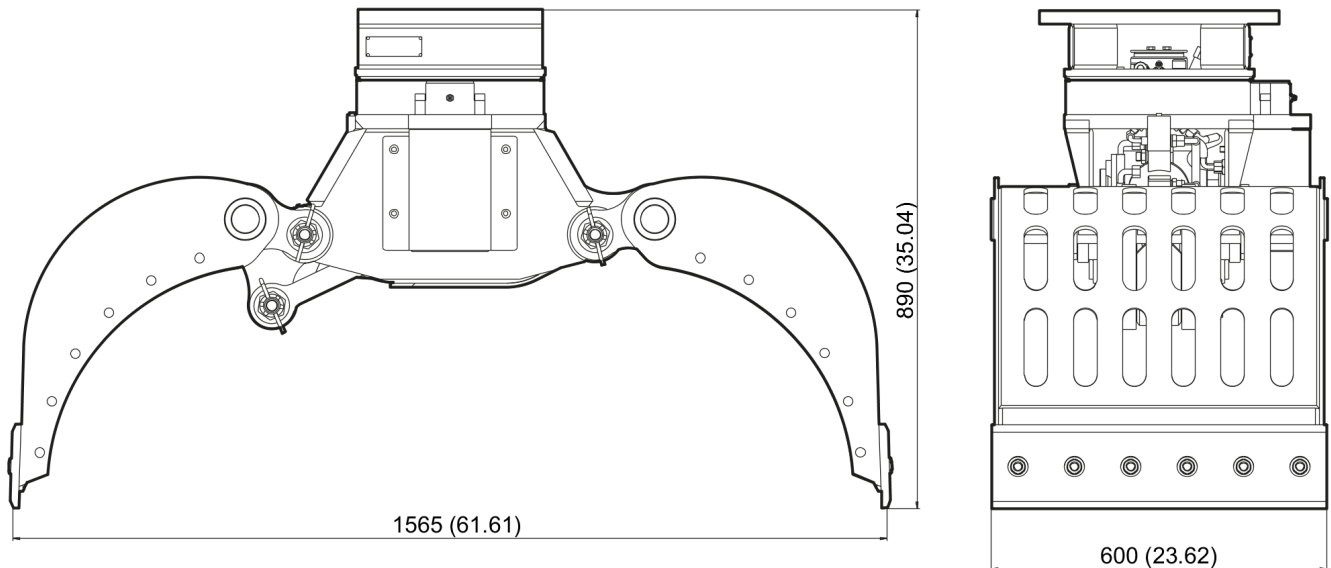
This page intentionally left blank

Mechanical Tightening torques

NO EXPLODED VIEW
AVAILABLE
FOR THIS BOM

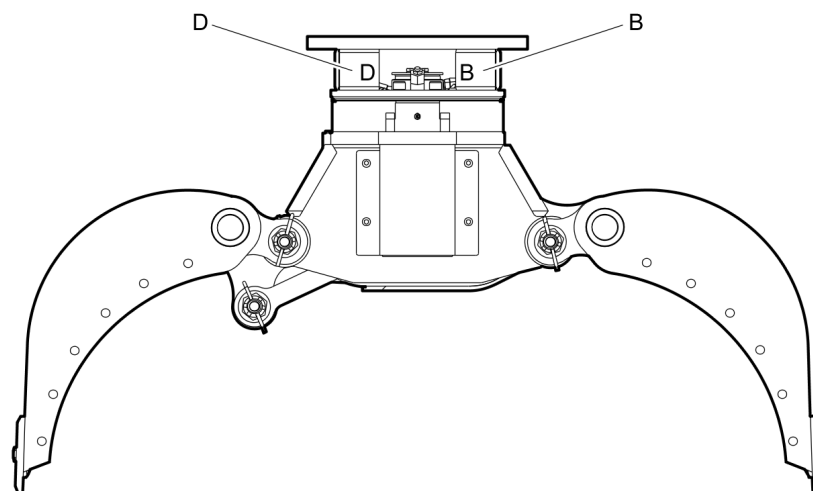
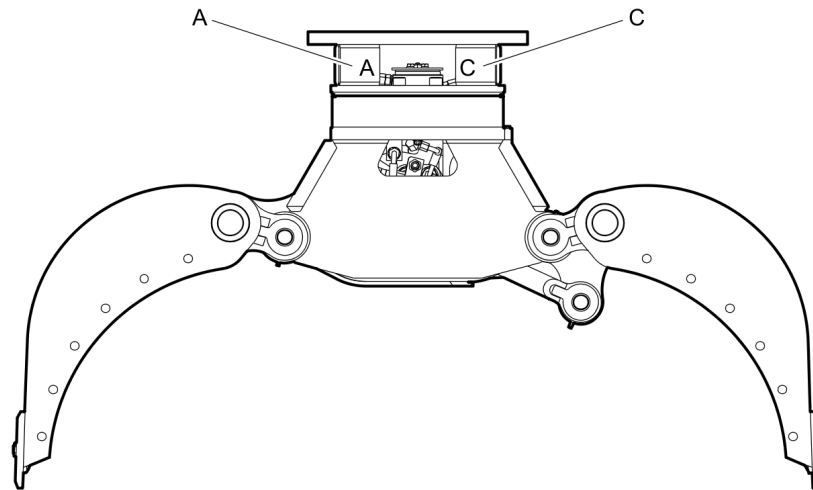
Item	Part No.	Name	Qty	L
Not Shown	-	Bolt size: M8, property class: 10.9 - 40 Nm (30 ft lbf)	-	
Not Shown	-	Bolt size: M10, property class: 10.9 - 80 Nm (59 ft lbf)	-	
Not Shown	-	Bolt size: M12, property class: 10.9 - 130 Nm (96 ft lbf)	-	
Not Shown	-	Bolt size: M12 x 1.25, property class: 10.9 - 110 Nm (81 ft lbf)	-	A
Not Shown	-	Bolt size: M14, property class: 10.9 - 200 Nm (148 ft lbf)	-	
Not Shown	-	Bolt size: M16, property class: 10.9 - 300 Nm (221 ft lbf)	-	
Not Shown	-	Bolt size: M20, property class: 10.9 - 600 Nm (443 ft lbf)	-	
Not Shown	-	Bolt size: M24, property class: 10.9 - 1000 Nm (738 ft lbf)	-	
Not Shown	-	Bolt size: M27, property class: 10.9 - 1500 Nm (1106 ft lbf)	-	
Not Shown	-	Bolt size: M30, property class: 10.9 - 2000 Nm (1475 ft lbf)	-	
Not Shown	-	Bolt size: M36, property class: 10.9 - 3600 Nm (2655 ft lbf)	-	
Not Shown	-	Bolt size: M39, property class: 10.9 - 4600 Nm (3393 ft lbf)	-	

Mechanical Dimensions



This page intentionally left blank

Options / accessories Hydraulic ports, hydraulic hoses



Item	Part No.	Name	Qty	L
Not Shown	-	Open - Close		
-	3363094540	Hydraulic Hose, I.D. 10 (3/8 in.) both ends M20 x 1.5, conical seal 24°, length 2000 mm (78.4 in.)	2	
Not Shown	-	Rotation		
-	3363094541	Hydraulic hose, I.D. 8 both ends M16 x 1.5, conical seal 24°, length 2000 mm (78.74 in.)	2	

Comments for Page: Hydraulic ports, hydraulic hoses

Hydraulic ports

A | open

B | close

C | rotation counterclockwise

D | rotation clockwise

Options / accessories Optional equipment

NO EXPLODED VIEW
AVAILABLE
FOR THIS BOM

Item	Part No.	Name	Qty	L
-	3363094914	Cutter grease cartridge, 12 x 400 g (0.88 lbs)	1	
-	0909107100	LUBRICAT.GUN	1	
-		Adapter plate matching the carrier. Consult the authorized Customer Center/Dealer in your area.	1	
-	3315356600	BASE PLATE	1	
-	3315365360	SCREW SET	1	
-	3360430655	Open end spanner (24/27 mm)	1	
-	3376680105	Tooth blades kit	1	
-		Tooth blade	2	
-		Allen screw, M16 x 35 mm 10.9	12	
-		Hexagon nut, M16 A2K	12	
-	3376680106	Side closing plates kit	1	
-		Side closing plate	2	
-		Side closing plate	2	
-		Allen screw, M16 x 35 mm 10.9	24	
-		Hexagon nut, M16 A2K	24	

Any unauthorized use or copying of the contents or any part thereof is prohibited.
This applies in particular to trademarks, model denominations, part numbers, and drawings.