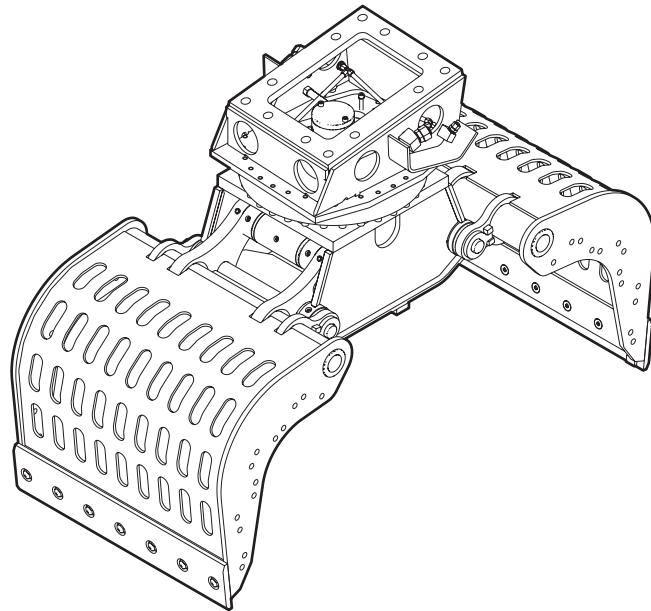


MG 1500

Spare parts list

Multi grapple

MG 1500 s/n DEQ176000 -



General information

This spare parts list applies to the following:

Part number	Description
1826101768	Multi grapple MG 1500

Use only authorized parts. Any damage or malfunction caused by the use of unauthorized parts is not covered by Warranty or Product Liability. Any unauthorized use or copying of the contents or any part thereof is prohibited. This applies in particular to trademarks, model denominations, part numbers, and drawings.

Instructions for use

This spare parts list contains no safety regulations and is merely intended to assist in the ordering of spare parts.

For information about operating, servicing, or repairing, the relevant Safety and operating instructions must be consulted at all costs.

Please observe the safety instructions listed in the relevant Safety and operating instructions!

Instructions for ordering

It is essential to indicate the serial number of the hydraulic attachment when ordering spare parts!

Please note the full identification number of your hydraulic attachment.

Determine the quantity of individual parts which are required and need to be ordered. The order must indicate the following details:

- full identification code of the hydraulic attachment
- required quantity
- part number
- description

Service, repair and wear part kits

Kit list 1

Mechanical

Multi grapple 3

Tightening torques 6

Dimensions 9

Options / accessories

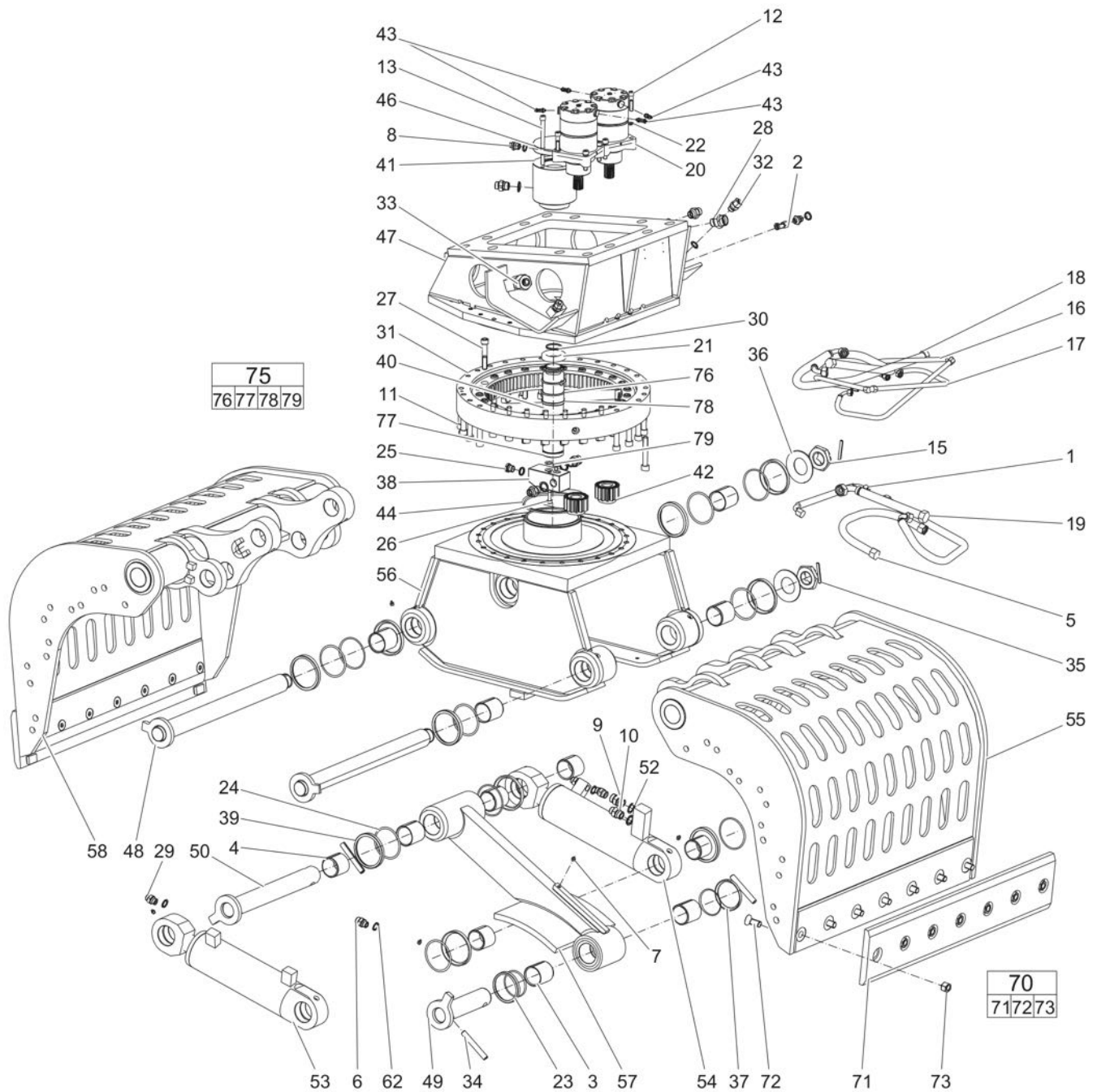
Hydraulic ports, hydraulic hoses 10

Optional equipment 13

Service, repair and wear part kits Kit list

NO EXPLODED VIEW
AVAILABLE
FOR THIS BOM

Item	Part No.	Name	Qty	L
KIT	3363098276	Label kit	1	
70(71-73)	3372100011	Blade kit	1	
71		Blade	2	
72	0216110044	Hexagon socket countersunk head screw M20 x 50 mm 10.9	14	
73	5730007419	Lock nut, M20 10.9	14	
KIT	3376684170	Seal kit (hydraulic cylinder)	1	
75(76-79)	3376684171	Seal kit (rotary transmission)	1	
76		Seal	3	
77		Sliding ring	1	
78		Wiper	1	
79		O-ring	2	
KIT	3376682182	Seal kit (Hydraulic motor)	1	

Mechanical Multi grapple

Refer to Parts Online for the most up to date information. The printed information might be outdated.

Tue Nov 14 13:12:01 UTC 2017

Item	Part No.	Name	Qty	L
1	3376100883	Hydraulic hose	1	
2	3376100895	Fitting	2	
3	3376100848	Bearing bush	8	
4	3376100880	Bearing bush	4	
5	3376100885	Hydraulic hose	1	
6	3376100894	Fitting	2	
7	3376100018	Grease nipple	10	
8	3376100872	Fitting	6	
9	3376100893	Fitting	2	
10	3376100892	Fitting	6	
11	4700902552	Allen screw	30	
12	4700903563	Screw M12 x 55 mm 12.9 GEOMET®	8	
13	4700929454	Screw, M12 x 160 mm 12.9GEOMET®	2	
15	3376100858	Hexagonal nut	2	
16	3376100881	Hydraulic hose	2	
17	3376100882	Hydraulic hose	2	
18	3376100884	Hydraulic hose	3	
19	3376100886	Hydraulic hose	1	
20	3376100887	Hydraulic motor	2	A
21	4700000115	Ball bearing	1	
22	4700900994	Lock washer	8	
23	3376100856	O-ring	2	
24	0663210374	O-ring 100 x 5 mm 70° IRH (NBR)	10	
25	3376100896	Plug	1	
26	0211136900	Allen screw M10 x 60 MM 12.9	2	
27	3376100073	Allen screw	24	
28	3376520023	Fitting	2	
29	3376560020	Fitting	4	
30	0335114500	Snap ring 50 x 2 mm	1	
31	3376100877	Live ring	1	
32	3376100873	Plug	2	
33	3376100874	Plug	2	
34	3376100879	Spring dowel sleeve	4	
35	0108136600	Spring dowel sleeve 8 x 70 mm	2	
36	3376100878	Disc	2	
37	3376682059	Seal	2	
38	3376685042	Connection block	1	

Refer to Parts Online for the most up to date information. The printed information might be outdated.

Tue Nov 14 13:12:01 UTC 2017

Item	Part No.	Name	Qty	L
39	3376685060	Seal	10	
40	3376685044	Rotor	1	
41	3376685045	Stator	1	
42	3376685061	Pinion	2	
43	3376683100	Pressure relief valve	4	
44	3376100935	V-ring	1	
46	3376685058	Cover	1	
47	3376685001	Upper part	1	
48	3376685046	Bolt	2	
49	3376685049	Bolt	1	
50	3376685051	Bolt	1	
52	3371813705	Seal	10	
53	3376685062	Hydraulic cylinder (left)	1	
54	3376685063	Hydraulic cylinder (right)	1	
55	3376684030	Grapple leaf (left)	1	
56	3376685012	Housing	1	
57	3376685025	Linkage	1	
58	3376684056	Grapple leaf (right)	1	
62	3371805714	U-seal ring 1/2	13	
70(71-73)	3372100011	Blade kit	1	
71		Blade	2	
72	0216110044	Hexagon socket countersunk head screw M20 x 50 mm 10.9	14	
73	5730007419	Lock nut, M20 10.9	14	
75(76-79)	3376684171	Seal kit (rotary transmission)	1	
76		Seal	3	
77		Sliding ring	1	
78		Wiper	1	
79		O-ring	2	

Comments for Page: Multi grapple

A | with item 43

This page intentionally left blank

Mechanical Tightening torques

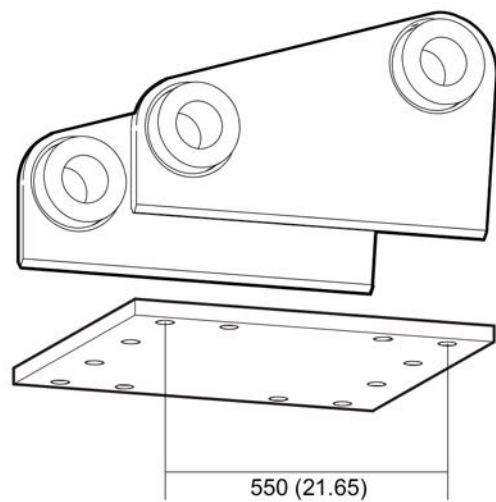
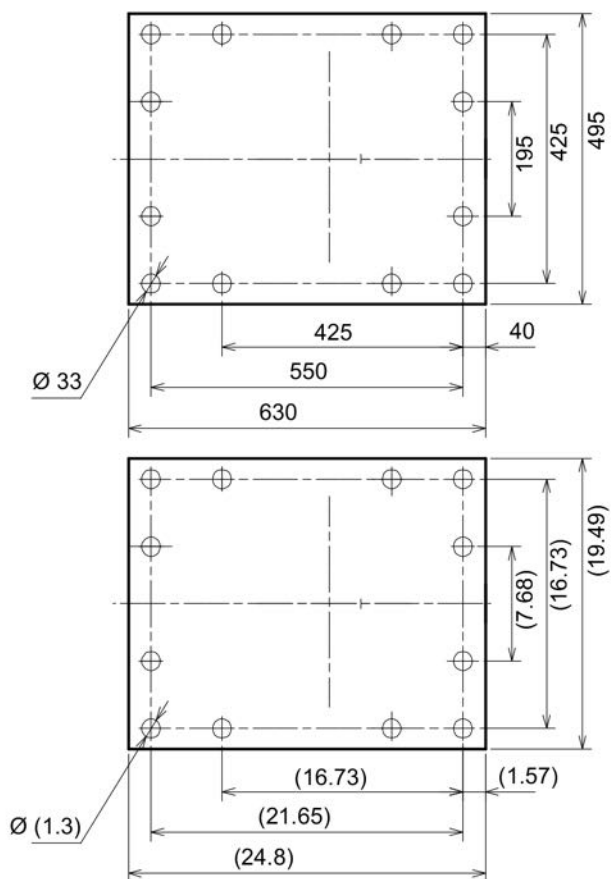
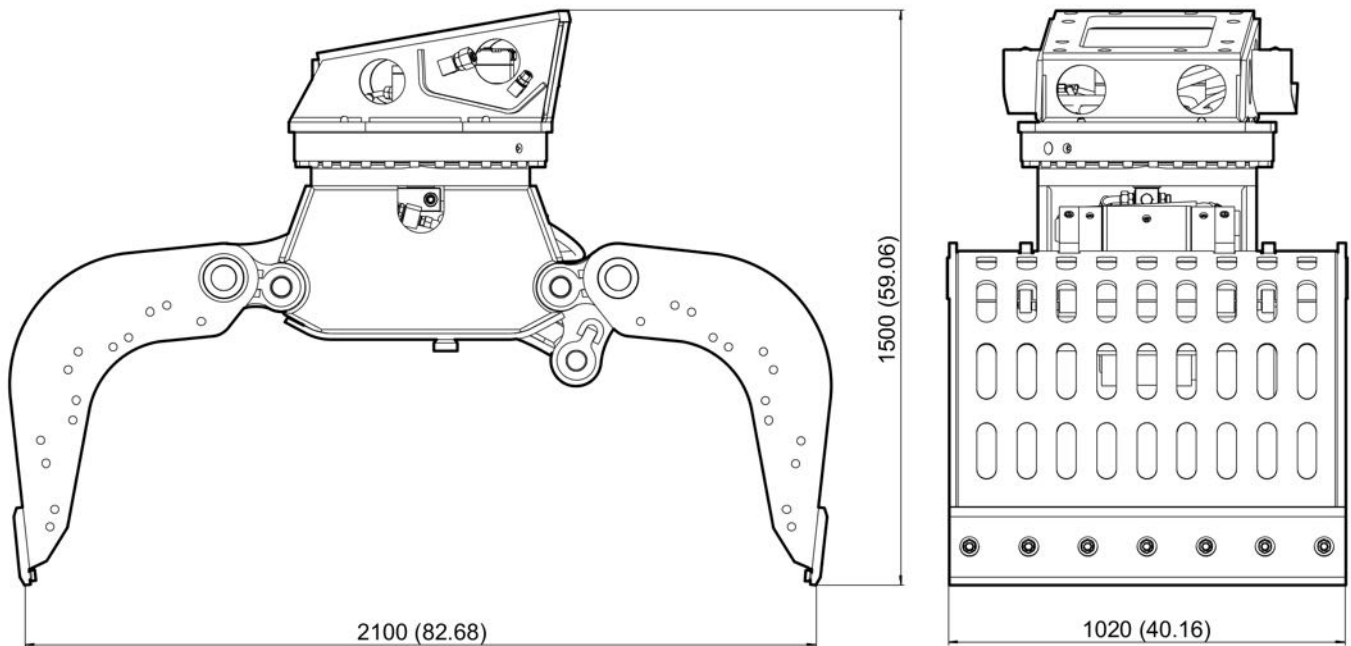
NO EXPLODED VIEW
AVAILABLE
FOR THIS BOM

Item	Part No.	Name	Qty	L
Not Shown	-	Bolt size: M8, property class: 10.9 - 40 Nm (30 ft lbf)	-	
Not Shown	-	Bolt size: M10, property class: 10.9 - 80 Nm (59 ft lbf)	-	
Not Shown	-	Bolt size: M12, property class: 10.9 - 130 Nm (96 ft lbf)	-	
Not Shown	-	Bolt size: M12 x 1.25, property class: 10.9 - 110 Nm (81 ft lbf)	-	A
Not Shown	-	Bolt size: M14, property class: 10.9 - 200 Nm (148 ft lbf)	-	
Not Shown	-	Bolt size: M16, property class: 10.9 - 300 Nm (221 ft lbf)	-	
Not Shown	-	Bolt size: M20, property class: 10.9 - 600 Nm (443 ft lbf)	-	
Not Shown	-	Bolt size: M24, property class: 10.9 - 1000 Nm (738 ft lbf)	-	
Not Shown	-	Bolt size: M27, property class: 10.9 - 1500 Nm (1106 ft lbf)	-	
Not Shown	-	Bolt size: M30, property class: 10.9 - 2000 Nm (1475 ft lbf)	-	
Not Shown	-	Bolt size: M36, property class: 10.9 - 3600 Nm (2655 ft lbf)	-	
Not Shown	-	Bolt size: M39, property class: 10.9 - 4600 Nm (3393 ft lbf)	-	

Comments for Page: Tightening torques

(L)OCAL REMARKS

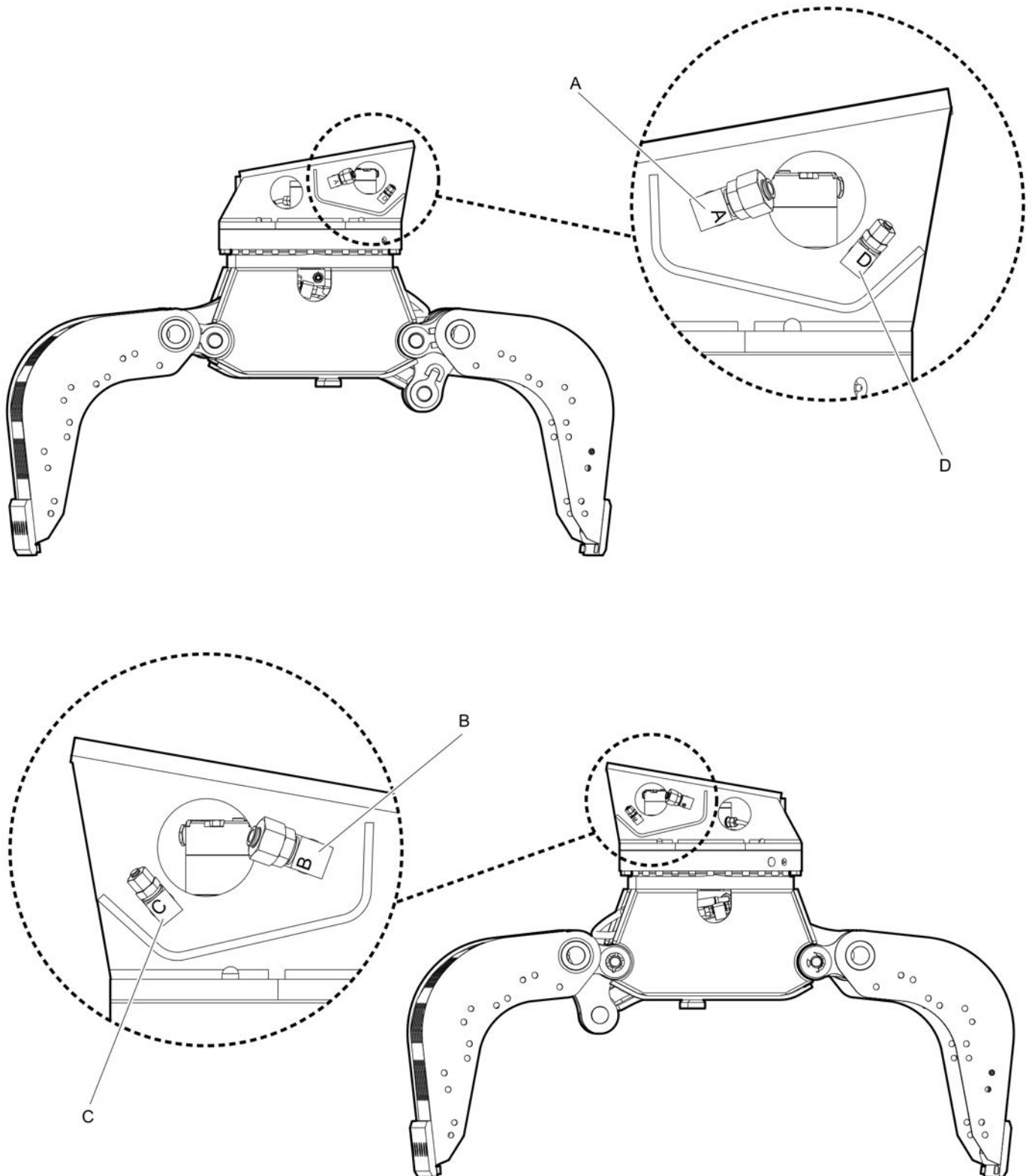
A | Note: fine thread

Mechanical Dimensions

Refer to Parts Online for the most up to date information. The printed information might be outdated.

Tue Nov 14 13:12:02 UTC 2017

This page intentionally left blank

Options / accessories Hydraulic ports, hydraulic hoses

Item	Part No.	Name	Qty	L
Not Shown	-	Open - Close		
-	3360332294	Hydraulic hose, I.D. 20 (0.79 in.), both ends M36 x 2 mm conical seal 24°, length 2,300 mm (90.5 in.)	2	
-	3363085947	Hydraulic hose, I.D. 20 (0.79 in.), both ends M36 x 2 mm conical seal 24°, length 2,800 mm (110.2 in.)	2	
Not Shown	-	Rotation		
-	3363031767	Hydraulic hose, I.D. 8 (3/8"), both ends M20 x 1.5 conical seal 24°, length 2800 mm (110 in.)	2	
-	3363034399	Hydraulic hose, I.D. 8 (3/8"), both ends M20 x 1.5 conical seal 24°, length 3500 mm (138 in.)	2	

Comments for Page: Hydraulic ports, hydraulic hoses

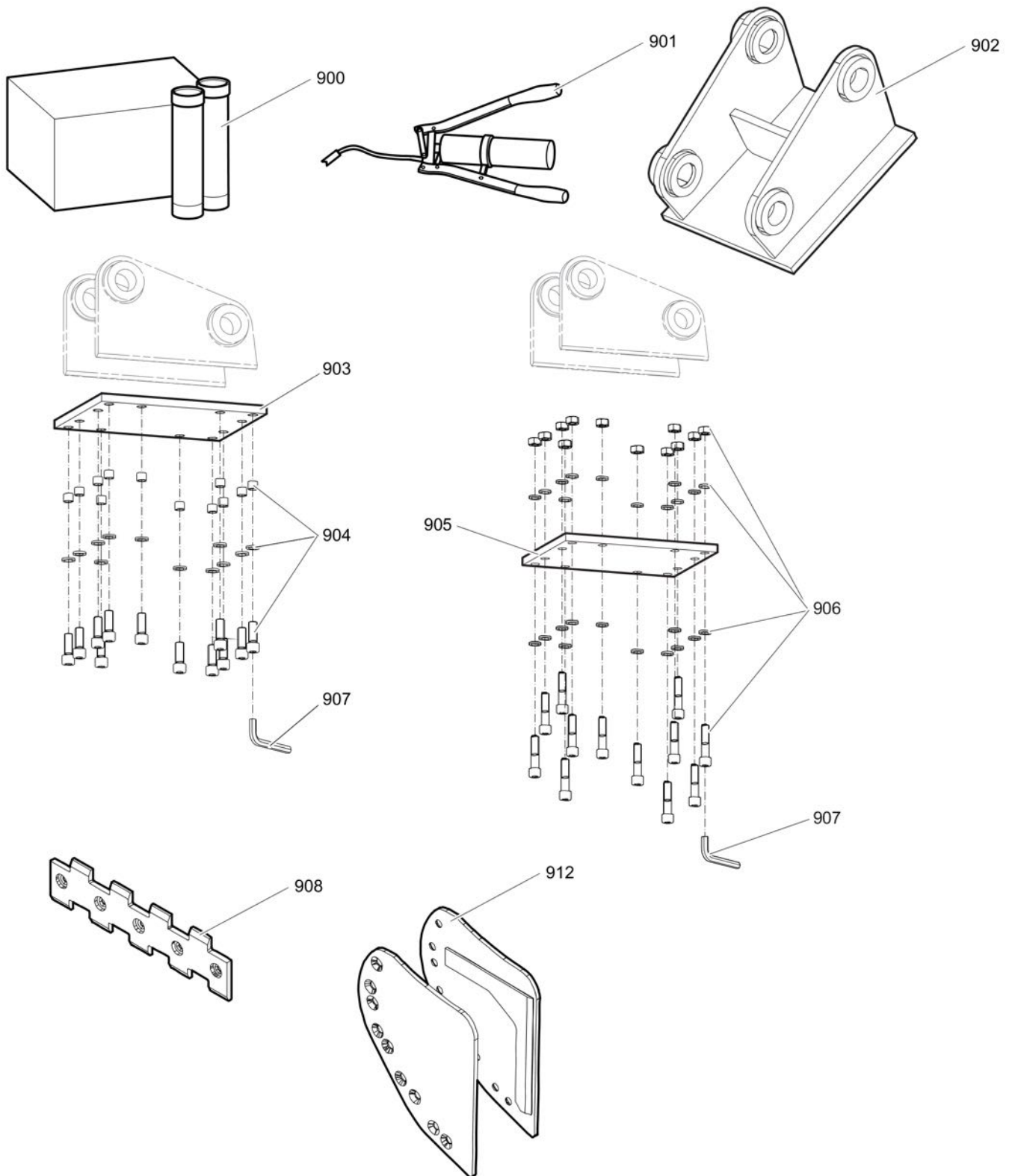
Hydraulic ports

A | open

B | close

C | rotation counterclockwise

D | rotation clockwise

Options / accessories Optional equipment

Item	Part No.	Name	Qty	L
900	3363094914	Cutter grease cartridge, 12 x 400 g (0.88 lbs)	1	
901	0909107100	Grease gun for 400 g cartridge	1	
902		Adapter plate matching the carrier. Consult the authorized Customer Center/Dealer in your area.	1	
903	3363099799	Base plate with threaded inserts	1	
904	3363087306	Bolt kit	1	
905	3363100697	Base plate with through borings	1	
906	3363094579	Bolt kit	1	
907	3360209445	Allen key (22 mm)	1	
908(909-911)	3376683105	Tooth blades kit	1	
909		Tooth blade	2	
910		Hexagon socket countersunk head screw	10	
911		Lock nut, M20 10.9	10	
912(913-916)	3376683106	Side closing plates kit	1	
913		Side closing plate	2	
914		Side closing plate	2	
905		Hexagon socket countersunk head screw M20 x 50 mm 10.9	24	
916		Lock nut, M20 10.9	24	

Any unauthorized use or copying of the contents or any part thereof is prohibited.
This applies in particular to trademarks, model denominations, part numbers, and drawings.