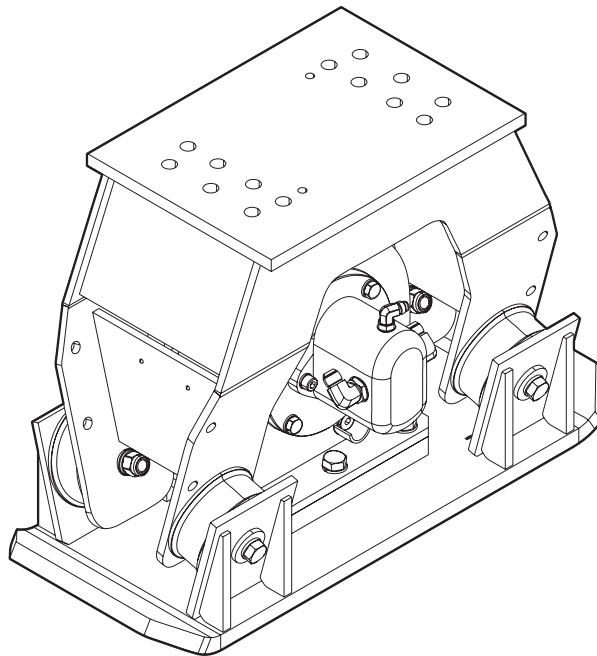


HC 150

Spare parts list Hydraulic compactor

HC 150 s/n DEQ176000 -



General information

This spare parts list applies to the following:

Part number	Description
1826101746	Hydraulic compactor HC 150

Use only authorized parts. Any damage or malfunction caused by the use of unauthorized parts is not covered by Warranty or Product Liability. Any unauthorized use or copying of the contents or any part thereof is prohibited. This applies in particular to trademarks, model denominations, part numbers, and drawings.

Instructions for use

This spare parts list contains no safety regulations and is merely intended to assist in the ordering of spare parts.

For information about operating, servicing, or repairing, the relevant Safety and operating instructions must be consulted at all costs.

Please observe the safety instructions listed in the relevant Safety and operating instructions!

Instructions for ordering

It is essential to indicate the serial number of the hydraulic attachment when ordering spare parts!

Please note the full identification number of your hydraulic attachment.

Determine the quantity of individual parts which are required and need to be ordered. The order must indicate the following details:

- full identification code of the hydraulic attachment
- required quantity
- part number
- description

Service, repair and wear part kits

Kit list

Mechanical

Hydraulic compactor

Tightening torques

Dimensions

Options / accessories

Hydraulic hoses

Optional equipment

1

3

5

7

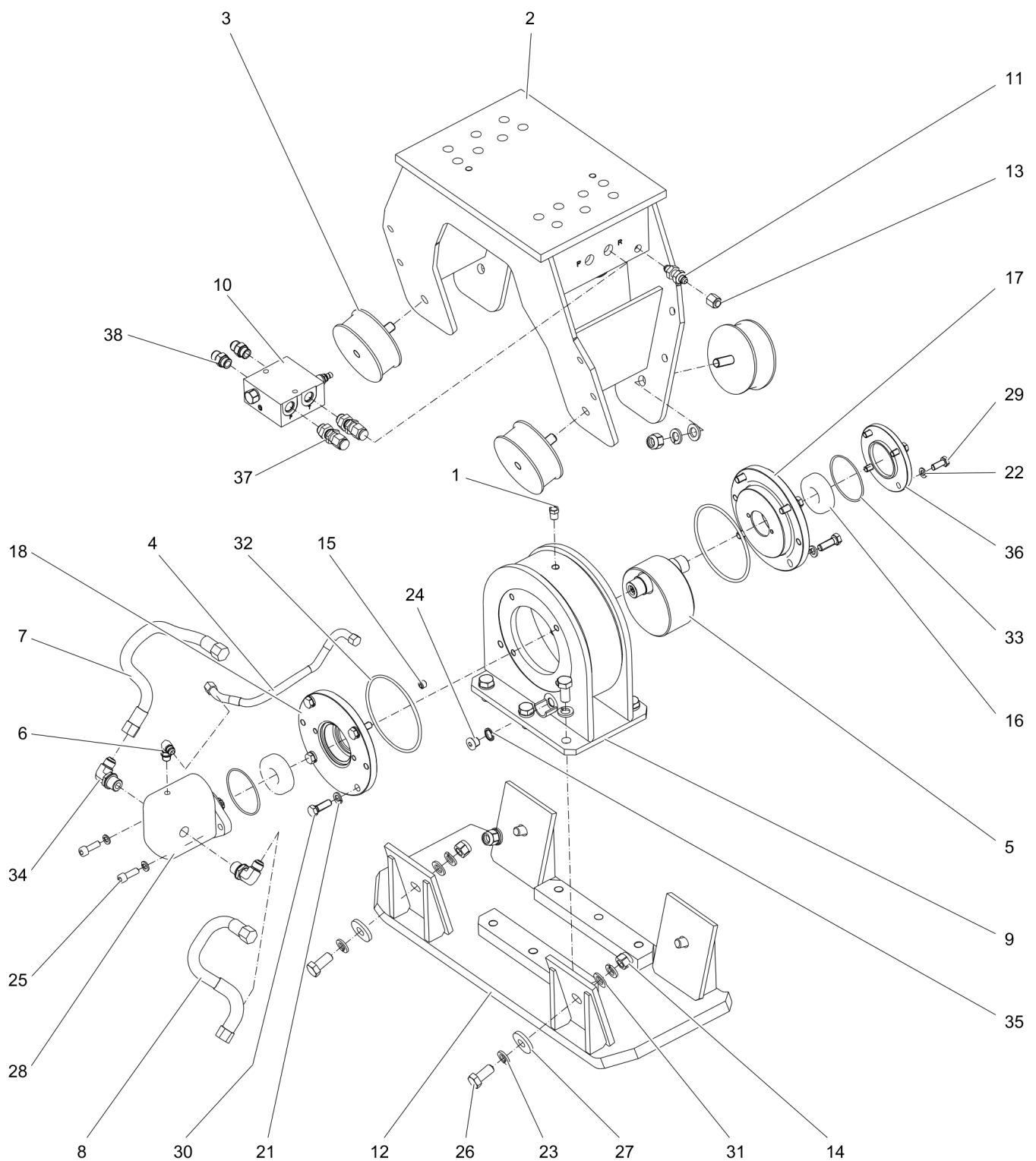
8

11

Service, repair and wear part kits Kit list

NO EXPLODED VIEW
AVAILABLE
FOR THIS BOM

Item	Part No.	Name	Qty	L
KIT	3376695231	Label kit	1	
KIT	3376695036	Seal kit (Hydraulic motor)	1	
KIT	3376695032	Rubber isolator kit	1	
3	3376100907	Rubber isolator	4	
14	0291112825	Nut	4	
23	0333217423	Washer DIN127	8	
26	0147147603	Screw	4	
27	0300012923	Washer 17 x 45 x 6 mm	4	
31	0301237800	Washer	4	

Mechanical Hydraulic compactor

Refer to Parts Online for the most up to date information. The printed information might be outdated.

Tue Nov 14 09:32:14 UTC 2017

Item	Part No.	Name	Qty	L
1	3376100779	Vent valve	1	
2	3376695406	Outer housing	1	
3	3376100907	Rubber isolator	4	
4	3376101521	Hydraulic hose	1	
5	3376689004	Rotor	1	
6	5500488000	Fitting, 90°, 9/16-18 UNF-2A, 9/16-18 UNF-2A	1	
7	3376101527	Hydraulic hose	1	
8	3376101526	Hydraulic hose	1	
9	3376695409	Rotor housing	1	
10	3376689007	Valve block, hydraulic motor side and carrier side: female thread 3/4" - 16" UNF	1	
11	3176649600	Fitting	1	
12	3376695403	Tamper plate	1	
13	3176542900	Cap	1	
14	0291112825	Nut	4	
15	0686612800	Plug	1	
16	0506010023	Bearing	2	
17	3376695012	Bearing retainer	1	
18	3376695011	Bearing retainer	1	
21	0333217421	Washer DIN127	8	
22	0333223000	Washer DIN127	6	
23	0333217423	Washer DIN127	14	
24	0686371626	Plug, 3/8 BSP	1	
25	0211136300	Screw	2	
26	0147147603	Screw	10	
27	0300012923	Washer 17 x 45 x 6 mm	4	
28	3376100833	Hydraulic motor	1	
29	0147136203	Hexagon bolt	4	
30	0147140203	Screw DIN933	8	
31	0301237800	Washer	4	
32	0663211340	O-ring 140 x 5 mm 70° IRH (NBR)	2	
33	0663212015	O-ring 84 x 3 mm 70° IRH (NBR)	2	
34	5500485600	Fitting 90°, 3/4" - 16 UNF-2A, 7/8 - 14 UNF-2A	2	
35	0661100016	Seal washer	1	
36	3376695013	Bearing cover	1	
37	3376100748	Fitting, bulkhead 3/4" UNF 37° - JIC 1/2" male	2	
38	3176127100	Fitting, straight UNF 3/4 - 16, UNF-2A 3/4 - 16	2	

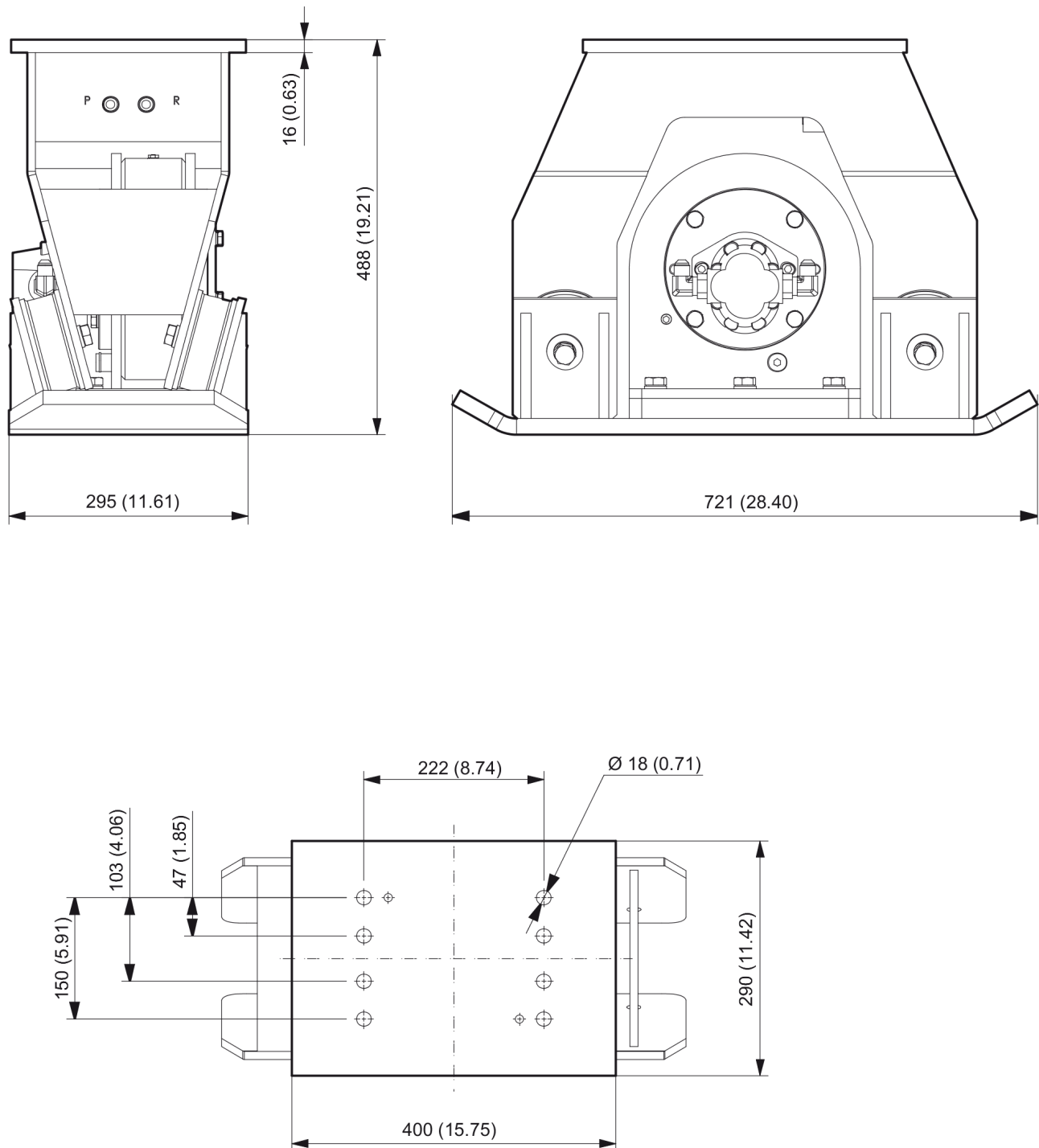
Refer to Parts Online for the most up to date information. The printed information might be outdated.

Tue Nov 14 09:32:14 UTC 2017

Mechanical Tightening torques

NO EXPLODED VIEW
AVAILABLE
FOR THIS BOM

Item	Part No.	Name	Qty	L
1	-	Open-ended wrench - pretighten finger tight, then 1 - 2 turns tighten with the open-ended wrench	-	
14	-	Open-ended wrench - 185 Nm (136 ft lbf)	-	
15	-	Allen key - pretighten finger tight, then 1 - 2 turns tighten with the Allen key	-	
24	-	Allen key - 30.5 Nm (22.5 ft lbf)	-	
25	-	Open-ended wrench - 54 Nm (40 ft lbf)	-	
26	-	Open-ended wrench - 230 Nm (170 ft lbf)	-	
30	-	Open-ended wrench - 54 / 93 Nm (40 / 69 ft lbf)	-	

Mechanical Dimensions

Refer to Parts Online for the most up to date information. The printed information might be outdated.

Tue Nov 14 09:32:15 UTC 2017

This page intentionally left blank

Options / accessories Hydraulic hoses

NO EXPLODED VIEW
AVAILABLE
FOR THIS BOM

Item	Part No.	Name	Qty	L
Not Shown	-	Pressure line / tank line		
-	3361353551	Hydraulic hose, I.D. 12 (0.47"), both ends M22 x 1.5, conical seal 24°, length 1750 mm (69 in.)	2	
-	3363085946	Hydraulic hose, I.D. 12 (0.47"), both ends M22 x 1.5, conical seal 24°, length 2100 mm (83 in.)	2	
Not Shown	-	Accessories to the hydraulic hoses		
-	3363098286	Fitting set	1	
Not Shown	-	Drainage for hydraulic motor		
-	3363119625	Hydraulic hose, I.D. 8 (3/8"), M20 x 1.5 conical seal 24° - 9/16-18 JIC, length 2800 mm (110 in.)	1	

Comments for Page: Hydraulic hoses

Note

Remove the genuine fittings carrier side from the valve block before mounting the fitting set.

Options / accessories Optional equipment

NO EXPLODED VIEW
AVAILABLE
FOR THIS BOM

Item	Part No.	Name	Qty	L
-	9234001203	Cobra & compactor Impact-OIL 1L	1	
-	9234001405	Cobra Compactor Impact-Oil, 20x1 L (0.22 gal) (0.26 US gal)	1	
-		Adapter plate matching the carrier. Consult the authorized Customer Center/Dealer in your area.	1	
-	3315322600	Base plate with through borings	1	
-	3315322100	Bolt kit	1	
-	3360430655	Open end spanner (24/27 mm)	1	
-	3376695108	Backfill blade kit	1	

Any unauthorized use or copying of the contents or any part thereof is prohibited.
This applies in particular to trademarks, model denominations, part numbers, and drawings.