

# MG 1000 N/R, MG 1000 R

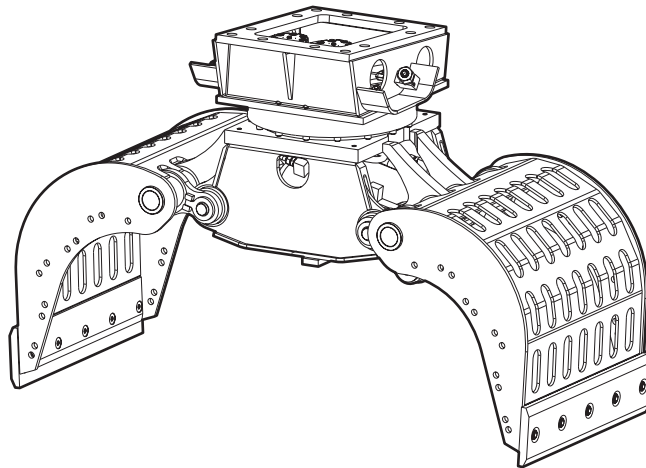
---

## Spare parts list

### Multi grapple

MG 1000 N/R s/n DEQ196528 -

MG 1000 R s/n DEQ196528 -



# General information

This spare parts list applies to the following:

Part number	Description
3363124120	Multi grapple MG 1000 N/R (non rotating)
3363123100	Multi grapple MG 1000 R (rotating)

Use only authorized parts. Any damage or malfunction caused by the use of unauthorized parts is not covered by Warranty or Product Liability. Any unauthorized use or copying of the contents or any part thereof is prohibited. This applies in particular to trademarks, model denominations, part numbers, and drawings.

## Instructions for use

This spare parts list contains no safety regulations and is merely intended to assist in the ordering of spare parts.

For information about operating, servicing, or repairing, the relevant Safety and operating instructions must be consulted at all costs.

Please observe the safety instructions listed in the relevant Safety and operating instructions!

## Instructions for ordering

It is essential to indicate the serial number of the hydraulic attachment when ordering spare parts!

Please note the full identification number of your hydraulic attachment.

Determine the quantity of individual parts which are required and need to be ordered. The order must indicate the following details:

- full identification code of the hydraulic attachment
- required quantity
- part number
- description

**Service, repair and wear part kits**

Kit list . . . . . 1

**Mechanical**

Multi grapple MG 1000 N/R part 1 . . . . . 3

Multi grapple MG 1000 N/R part 2 . . . . . 5

Housing complete MG 1000 N/R . . . . . 7

Multi grapple MG 1000 R part 1 . . . . . 9

Multi grapple MG 1000 R part 2 . . . . . 11

Housing complete MG 1000 R . . . . . 13

Linkage complete . . . . . 15

Hydraulic cylinder complete (left) . . . . . 17

Hydraulic cylinder complete (right) . . . . . 19

Grapple leafs complete . . . . . 21

Upper part . . . . . 23

Rotary transmission . . . . . 25

Tightening torques . . . . . 27

Dimensions MG 1000 N/R . . . . . 29

Dimensions MG 1000 R . . . . . 30

**Options / accessories**

Hydraulic ports, hydraulic hoses . . . . . 32

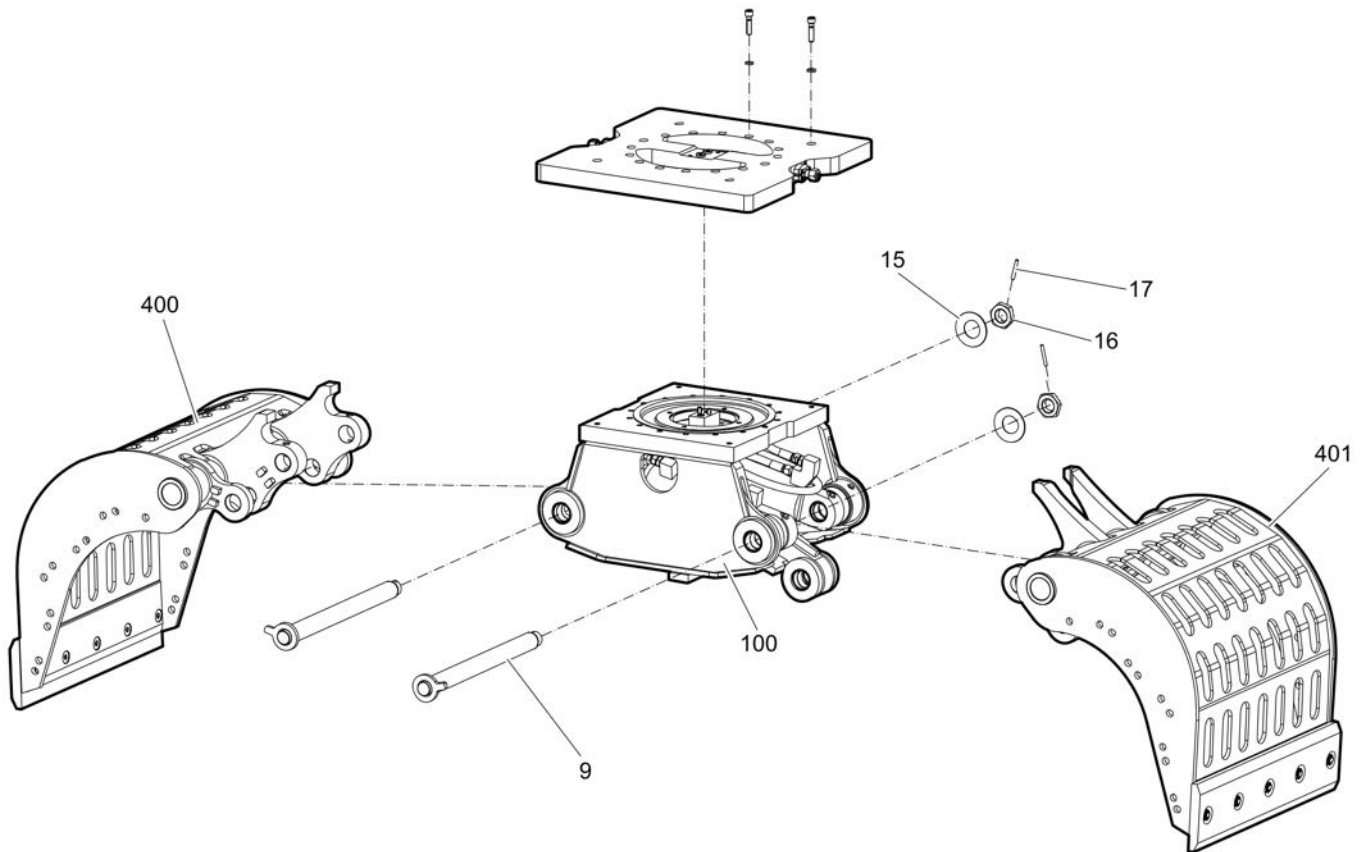
Optional equipment . . . . . 35

Service, repair and wear part kits Kit list

NO EXPLODED VIEW  
AVAILABLE  
FOR THIS BOM

Item	Part No.	Name	Qty	L
KIT	3363098275	Label kit	1	
410(411-413)	3363123456	Blade kit	1	
411		Blade	2	
412	0216110044	Hexagon socket countersunk head screw M20 x 50 mm 10.9	10	
413	3363124461	Hexagon nut	10	
KIT	3376683108	Seal kit (Live ring)	1	
220(221-227)	3376683168	Seal kit (Hydraulic cylinder)	1	
221		O-ring	1	
222		Back-up ring	1	
223		Seal	1	
224		Seal	1	
225		Seal	1	
226		Seal	2	
227		O-ring	1	
KIT	3363124375	Seal kit (Hydraulic motor)	1	

## Mechanical Multi grapple MG 1000 N/R part 1

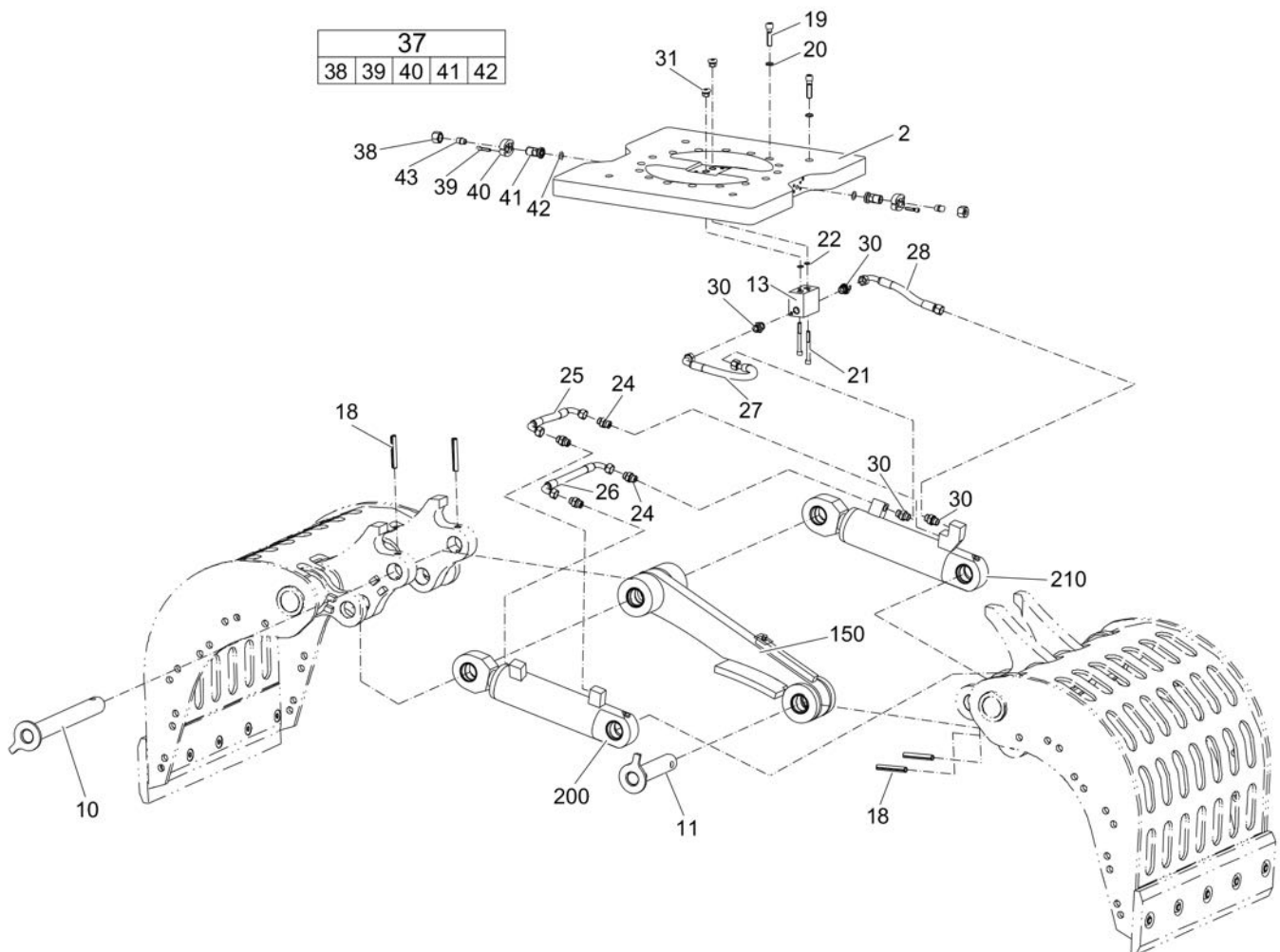


Item	Part No.	Name	Qty	L
9	3363123105	Bolt	2	
15	3376100859	Disc	2	
16	3376100855	Castle nut	2	
17	0108136500	SPRING PIN	2	
100	3363124279	Housing complete	1	A
400	3363123458	Grapple leaf complete (left)	1	A
401	3363123459	Grapple leaf complete (right)	1	A

Comments for Page: Multi grapple MG 1000 N/R part 1

A | see separate chapter

## Mechanical Multi grapple MG 1000 N/R part 2



Refer to the DocMine web page for most up-to-date information. The printed information might be outdated.

Fri Aug 16 07:05:30 UTC 2019

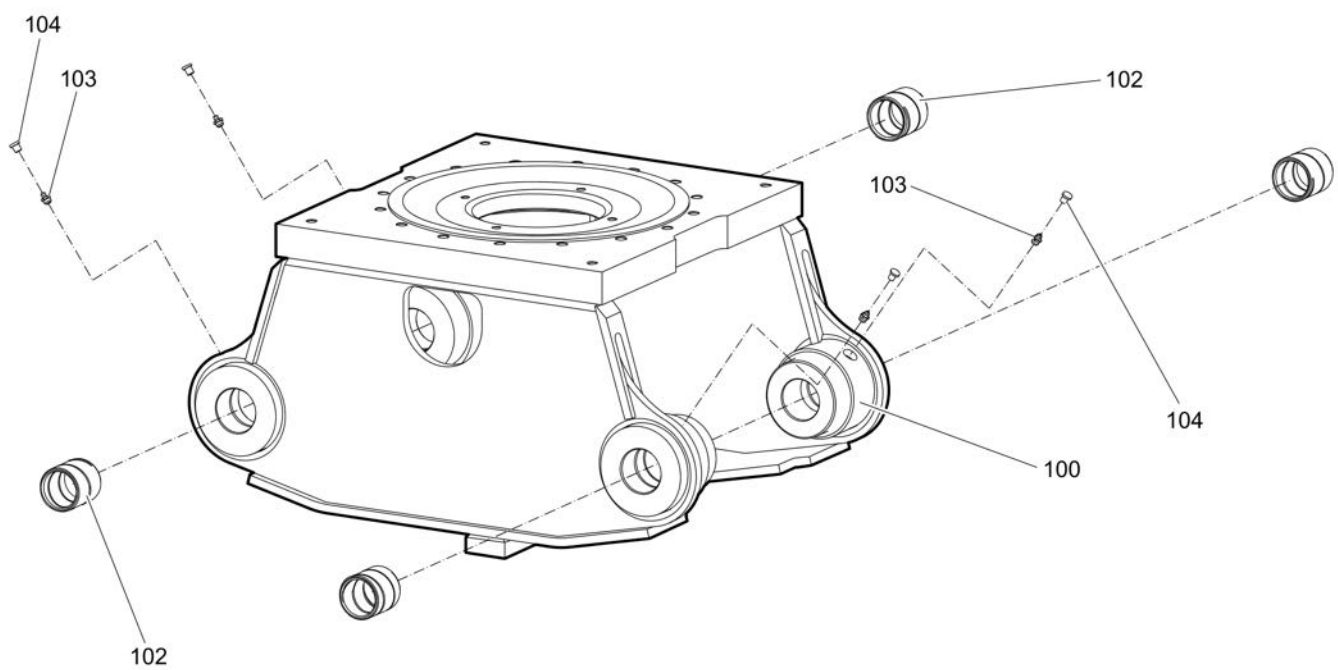


Item	Part No.	Name	Qty	L
2	3363124280	Plate	1	
10	3363123107	Bolt	1	
11	3363123104	Bolt	1	
13	3363123927	Connection block	1	
18	3361031966	Spring dowel sleeve	4	
19	3363031590	Allen screw	20	
20	3362261563	Pair of lock washers	20	
21	3360026400	Allen screw	2	
22	3361031925	O-ring	2	
24	3376560020	Fitting	4	
25	3363124590	Hydraulic hose	1	
26	3376100901	Hydraulic hose	1	
27	3363124379	Hydraulic hose	1	
28	3376100899	Hydraulic hose	1	
30	3371805711	Nipple, 1/2 in. BSP	4	
31	3360478441	Plug	2	
37(38-42)	3363124153	Fitting	2	
38	3360478441	Plug	1	
39	3363123928	Allen screw	4	
40	3363123929	Flange half	2	
41	3363123931	Adapter	1	
42	3360314574	O-ring	1	
43	3360314594	Plug	2	
150	3363123463	Linkage complete	1	A
200	3363123461	Hydraulic cylinder complete (left)	1	A
210	3363123462	Hydraulic cylinder complete (right)	1	A

Comments for Page: Multi grapple MG 1000 N/R part 2

A | see separate chapter

## Mechanical Housing complete MG 1000 N/R

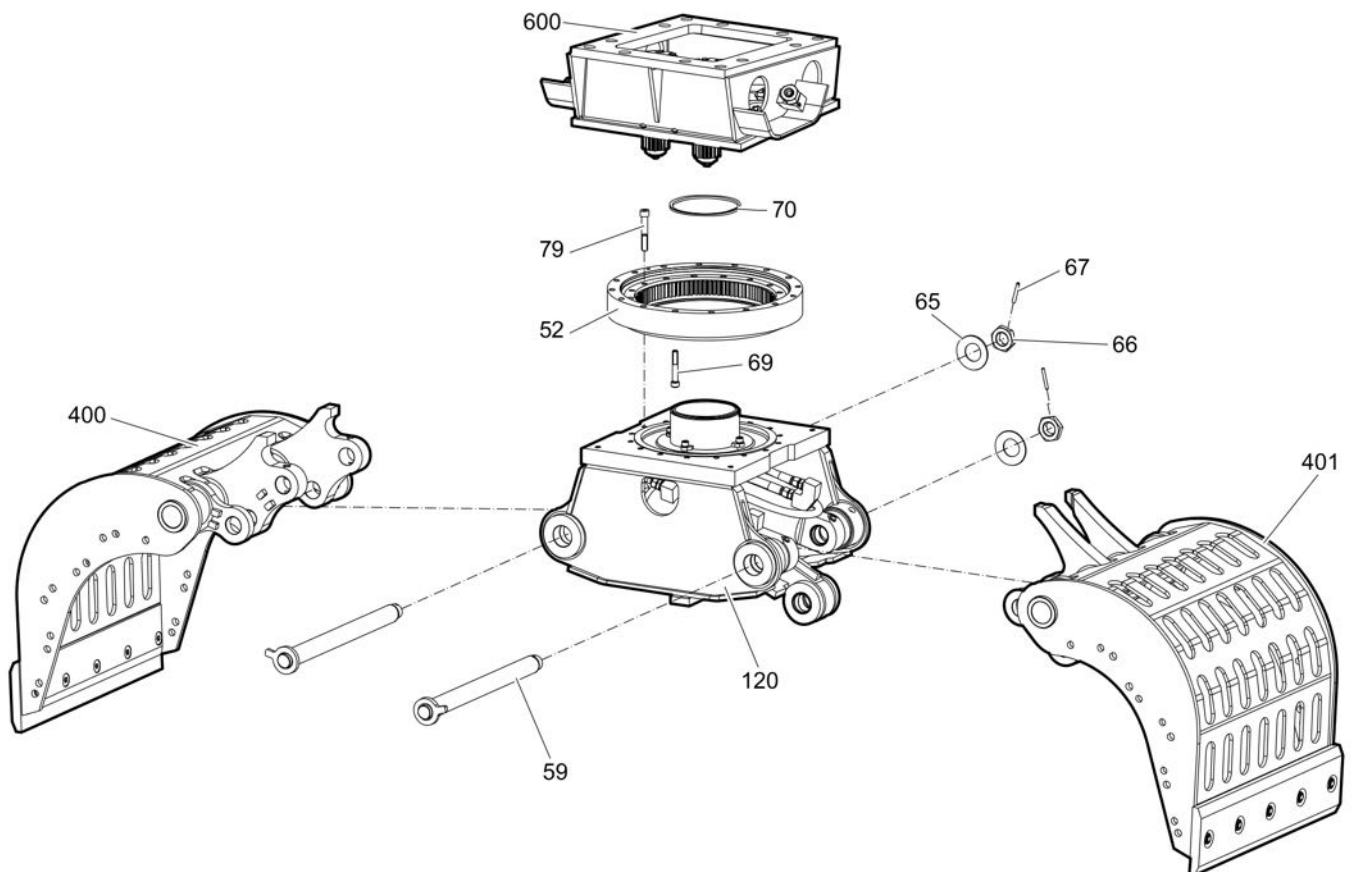


Item	Part No.	Name	Qty	L
100	3363124279	Housing complete	1	A
102	3363123242	Bearing bush	4	
103	3360209834	Grease nipple	4	
104	3363087600	Cap	4	

Comments for Page: Housing complete MG 1000 N/R

A | with item 102 - 104

## Mechanical Multi grapple MG 1000 R part 1

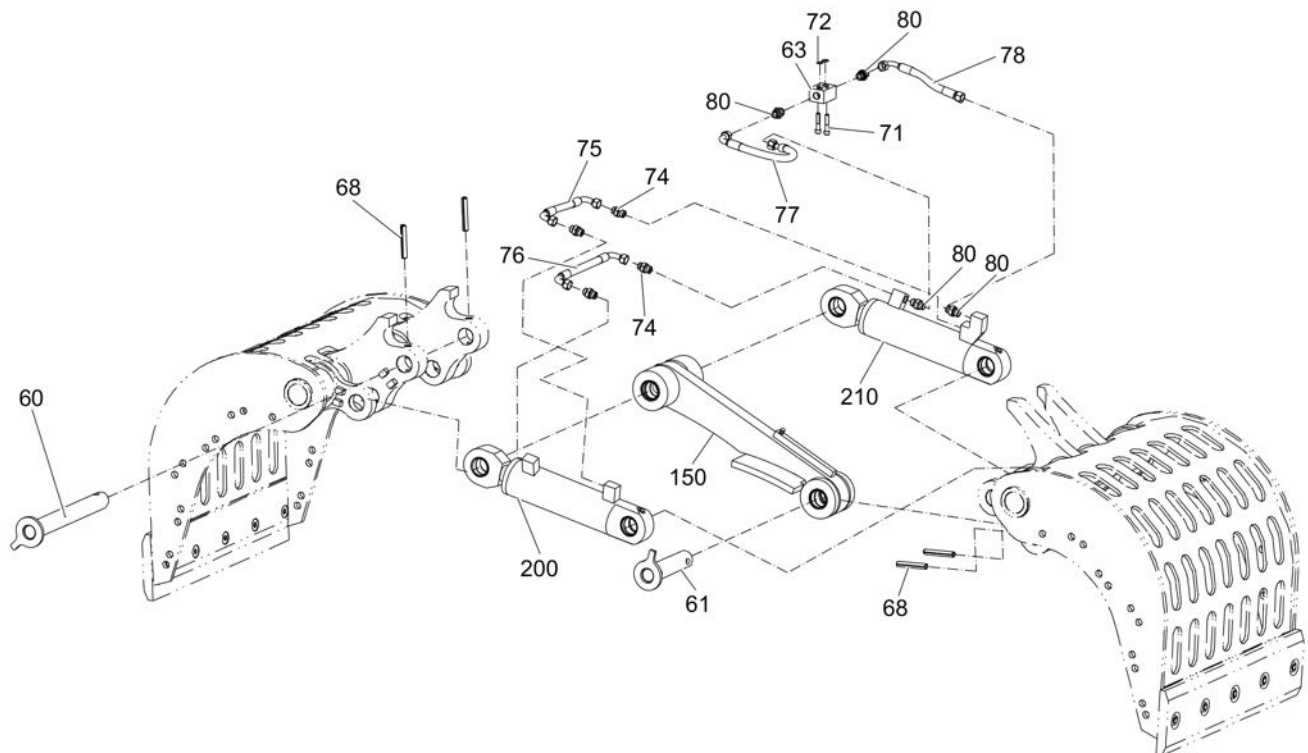


Item	Part No.	Name	Qty	L
52	3376100905	Live ring	1	
59	3363123105	Bolt	2	
65	3376100859	Disc	2	
66	3376100855	Castle nut	2	
67	0108136500	SPRING PIN	2	
69	0211145000	SCREW	16	
70	3376100935	V-ring	1	
79	3363124378	Allen screw	16	
120	3363123457	Housing complete	1	A
400	3363123458	Grapple leaf complete (left)	1	A
401	3363123459	Grapple leaf complete (right)	1	A
600	3363123316	Upper part	1	A

Comments for Page: Multi grapple MG 1000 R part 1

A | see separate chapter

## Mechanical Multi grapple MG 1000 R part 2

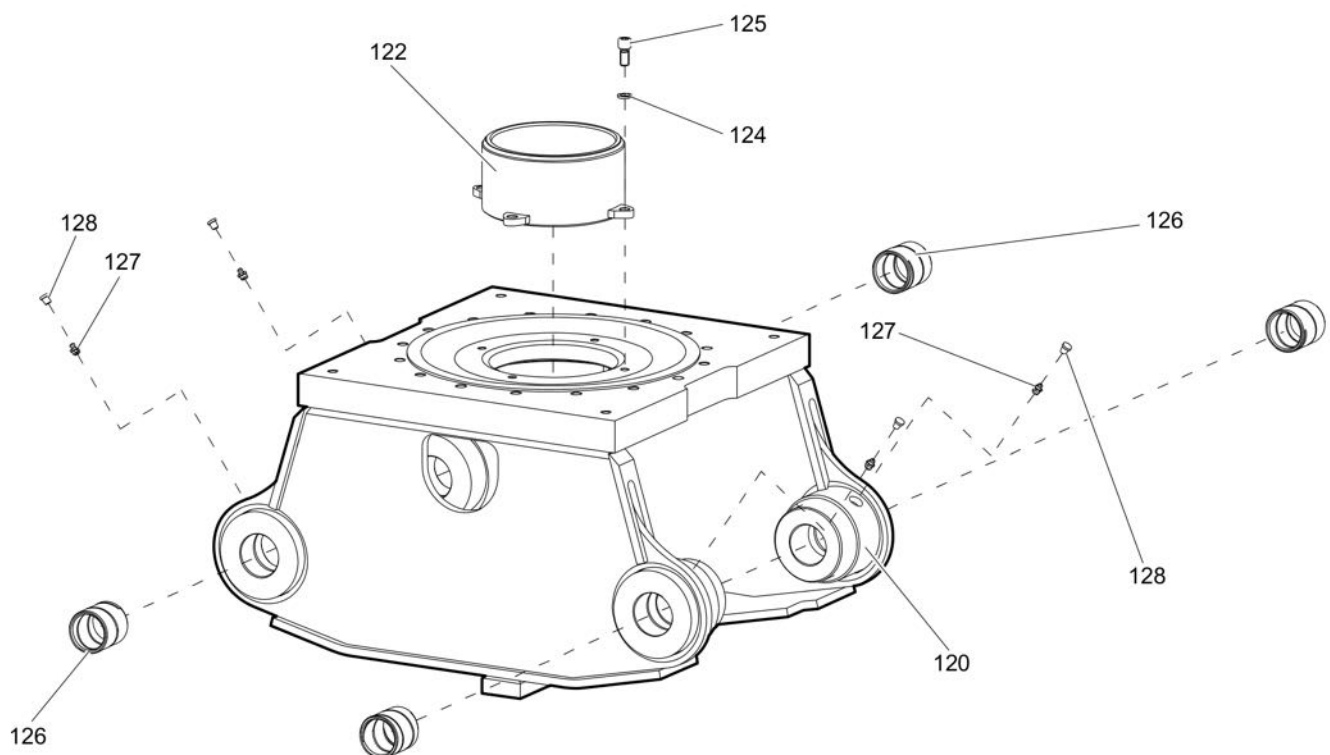


Item	Part No.	Name	Qty	L
60	3363123107	Bolt	1	
61	3363123104	Bolt	1	
63	3363123322	Connection block	1	
68	3361031966	Spring dowel sleeve	4	
71	3371815720	Allen screw	2	
72	3361031925	O-ring	2	
74	3376560020	Fitting	4	
75	3363124590	Hydraulic hose	1	
76	3376100901	Hydraulic hose	1	
77	3363124379	Hydraulic hose	1	
78	3376100899	Hydraulic hose	1	
80	3371805711	Nipple, 1/2 in. BSP	4	
150	3363123463	Linkage complete	1	A
200	3363123461	Hydraulic cylinder complete (left)	1	A
210	3363123462	Hydraulic cylinder complete (right)	1	A

Comments for Page: Multi grapple MG 1000 R part 2

A | see separate chapter

## Mechanical Housing complete MG 1000 R



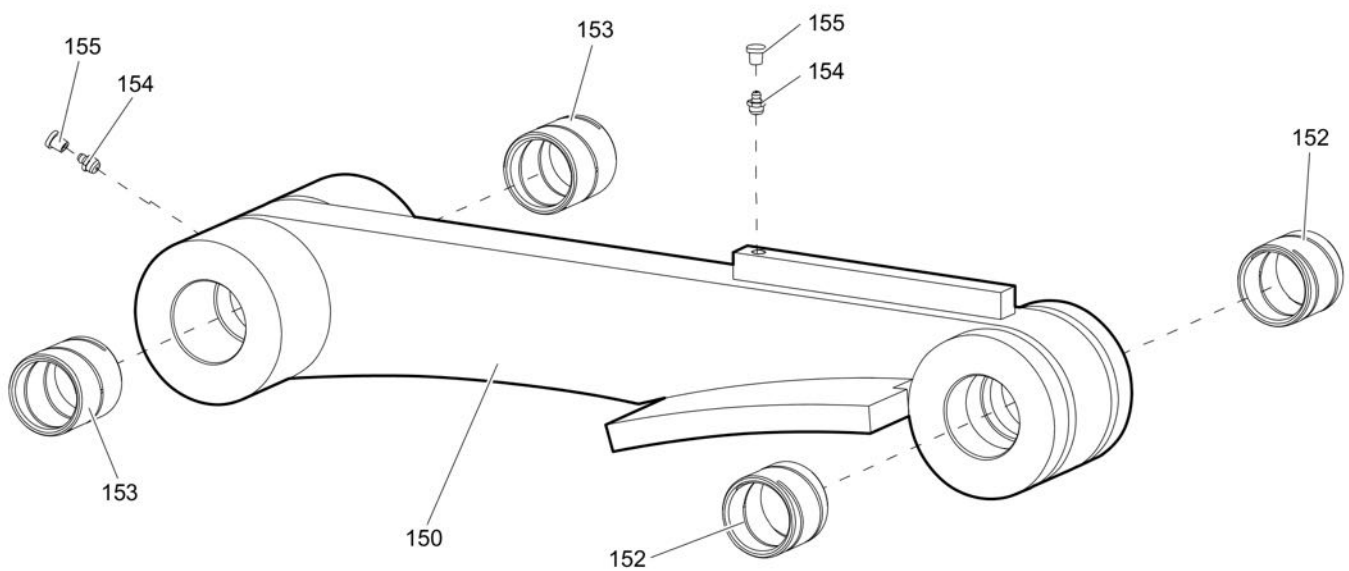


Item	Part No.	Name	Qty	L
120	3363123457	Housing complete	1	A
122	3363123080	Spacer ring	1	
124	3361850596	Pair of lock washers	4	
125	3360103750	Allen screw	4	
126	3363123242	Bearing bush	4	
127	3360209834	Grease nipple	4	
128	3363087600	Cap	4	

Comments for Page: Housing complete MG 1000 R

A | with item 122 - 128

## Mechanical Linkage complete

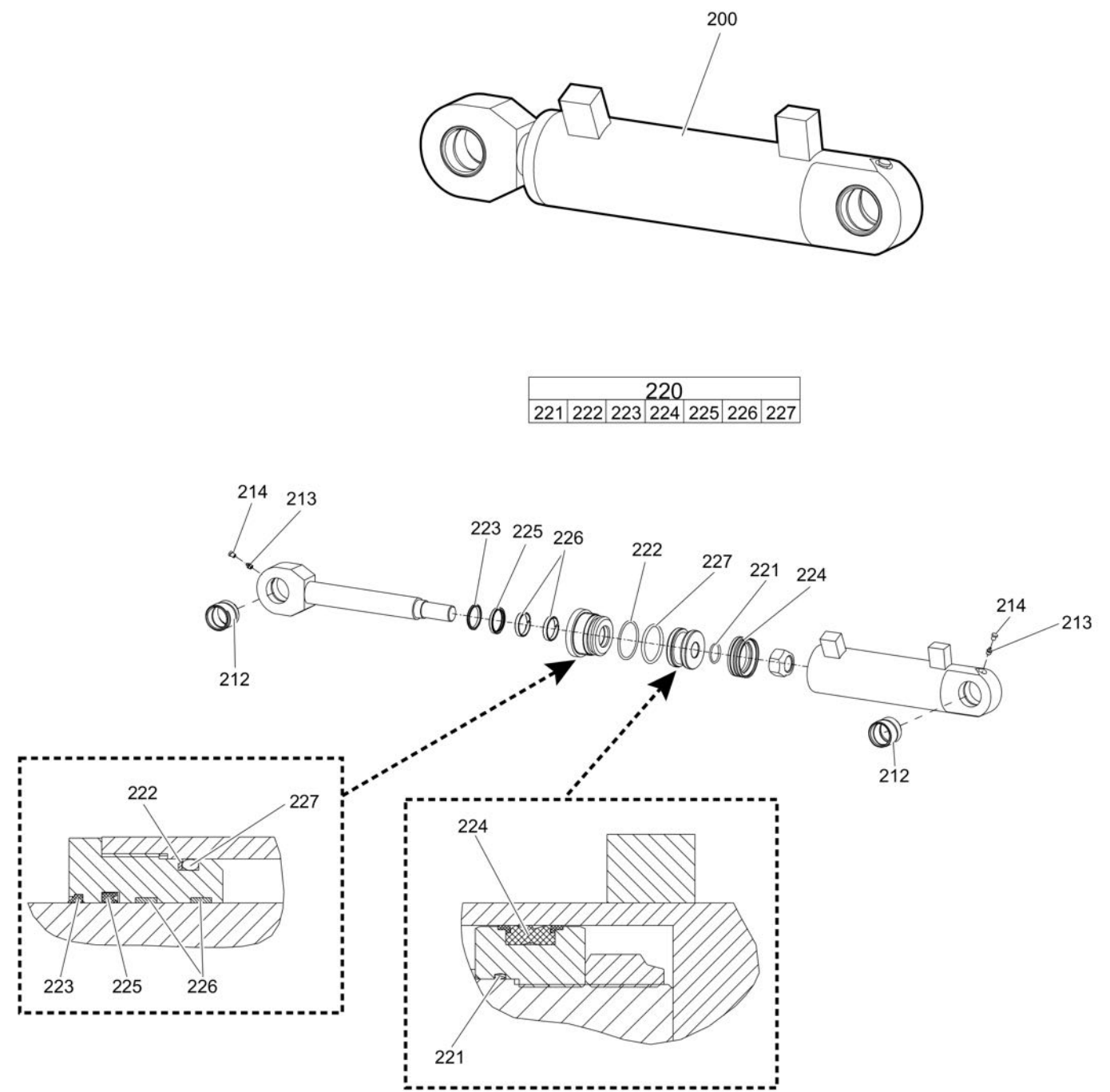


Item	Part No.	Name	Qty	L
150	3363123463	Linkage complete	1	A
152	3363123260	Bearing bush	2	
153	3363123242	Bearing bush	2	
154	3360209834	Grease nipple	2	
155	3363087600	Cap	2	

Comments for Page: Linkage complete

A | with item 152 - 155

Mechanical Hydraulic cylinder complete (left)

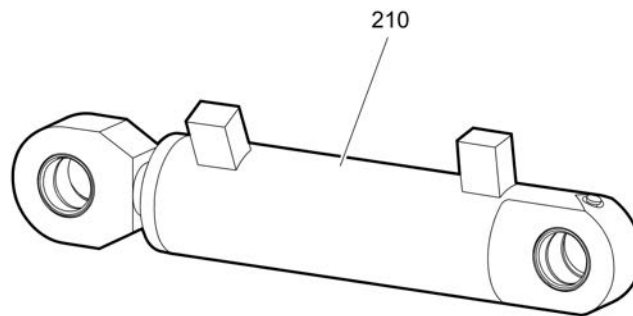


Item	Part No.	Name	Qty	L
200	3363123461	Hydraulic cylinder complete (left)	1	A
212	3363123260	Bearing bush	2	
213	3360209834	Grease nipple	2	
214	3363087600	Cap	2	
220(221-227)	3376683168	Seal kit (Hydraulic cylinder)	1	
221		O-ring	1	
222		Back-up ring	1	
223		Seal	1	
224		Seal	1	
225		Seal	1	
226		Seal	2	
227		O-ring	1	

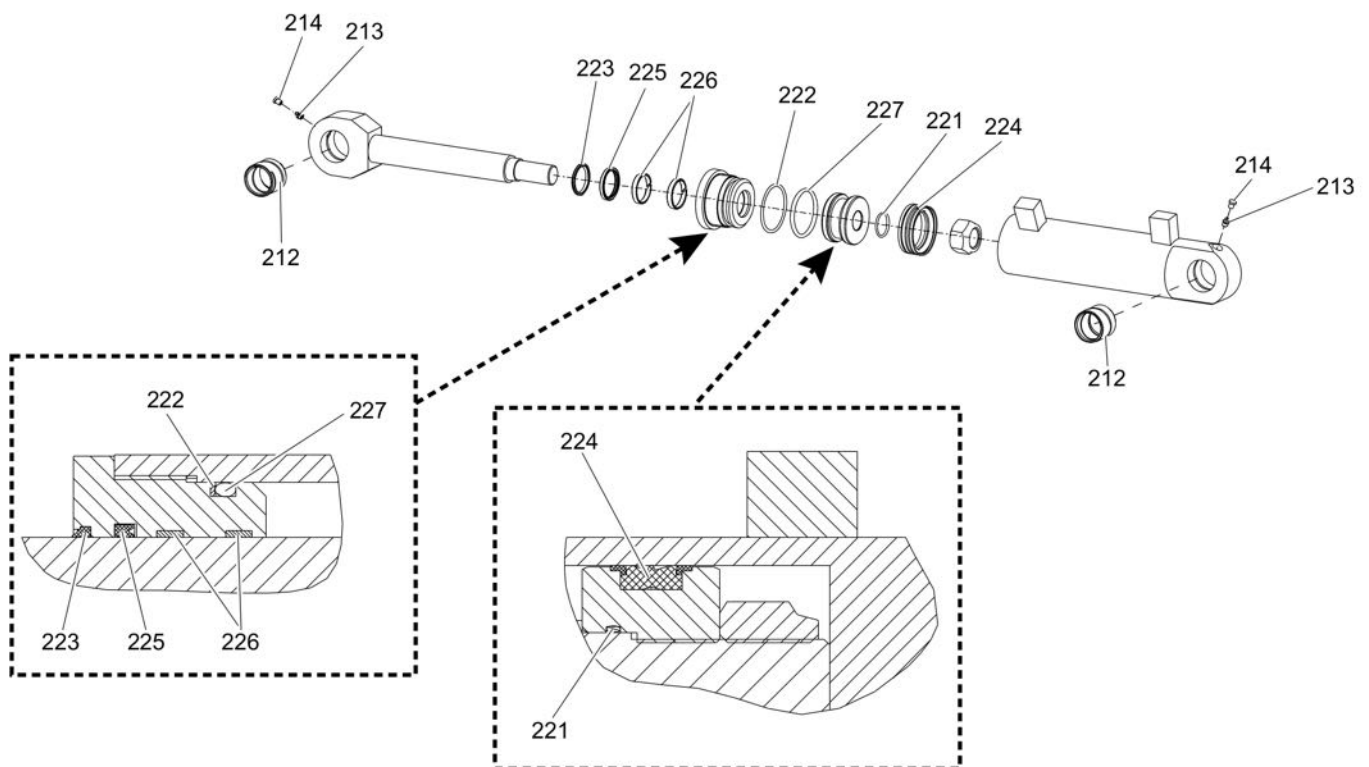
Comments for Page: Hydraulic cylinder complete (left)

A | with item 212 - 227

## Mechanical Hydraulic cylinder complete (right)



220						
221	222	223	224	225	226	227

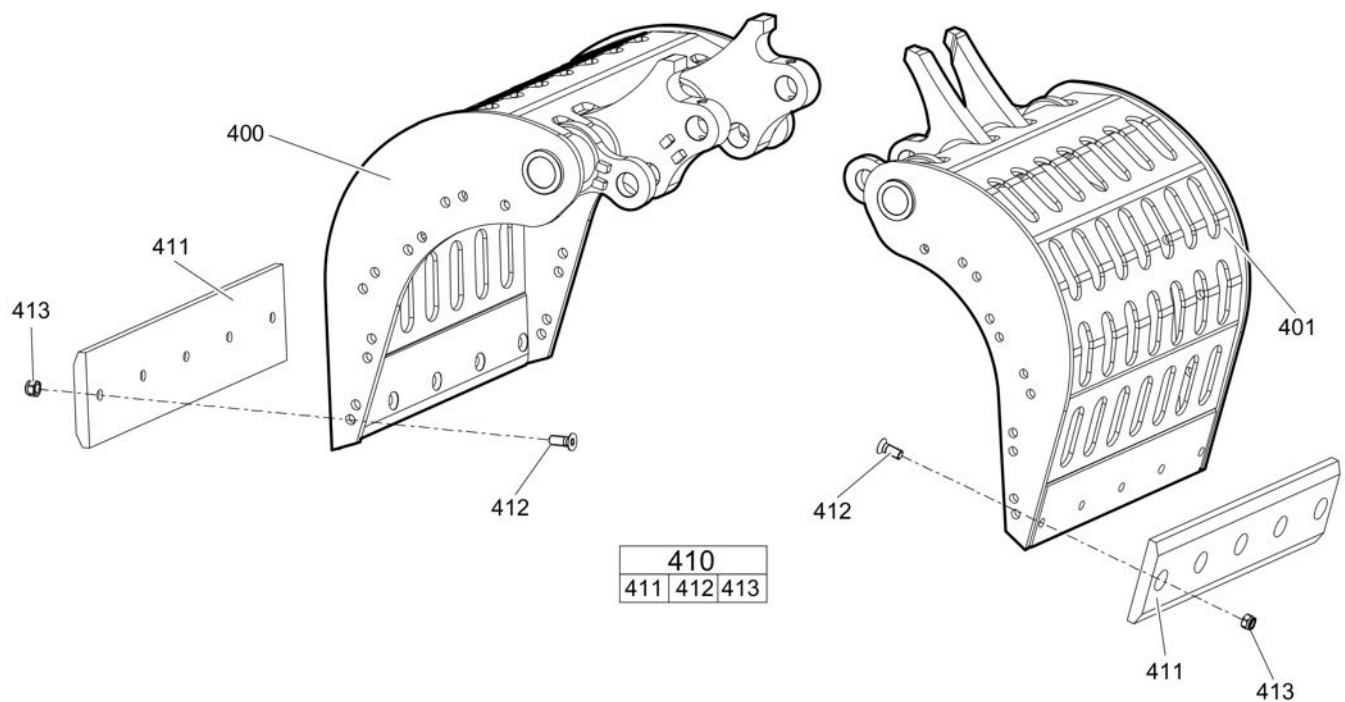


Item	Part No.	Name	Qty	L
210	3363123462	Hydraulic cylinder complete (right)	1	A
212	3363123260	Bearing bush	2	
213	3360209834	Grease nipple	2	
214	3363087600	Cap	2	
220(221-227)	3376683168	Seal kit (Hydraulic cylinder)	1	
221		O-ring	1	
222		Back-up ring	1	
223		Seal	1	
224		Seal	1	
225		Seal	1	
226		Seal	2	
227		O-ring	1	

Comments for Page: Hydraulic cylinder complete (right)

A | with item 212 - 227

## Mechanical Grapple leafs complete





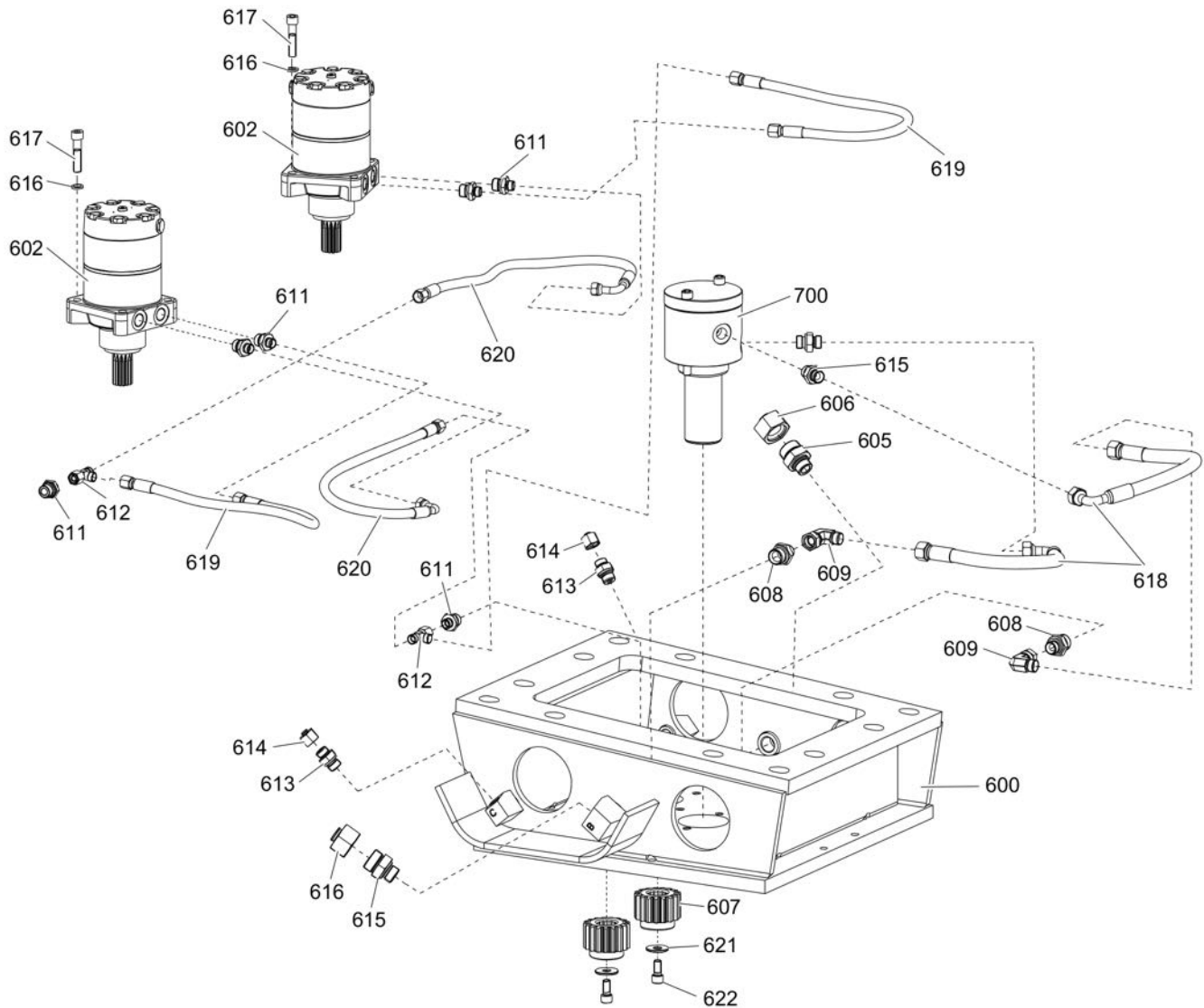
Item	Part No.	Name	Qty	L
400	3363123458	Grapple leaf complete (left)	1	A
401	3363123459	Grapple leaf complete (right)	1	B
410(411-413)	3363123456	Blade kit	1	
411		Blade	2	
412	0216110044	Hexagon socket countersunk head screw M20 x 50 mm 10.9	10	
413	3363124461	Hexagon nut	10	

Comments for Page: Grapple leafs complete

A | with 1 x item 411, 5 x item 412, 5 x item 413

B | with 1 x item 411, 5 x item 412, 5 x item 413

## Mechanical Upper part



Refer to the DocMine web page for most up-to-date information. The printed information might be outdated.

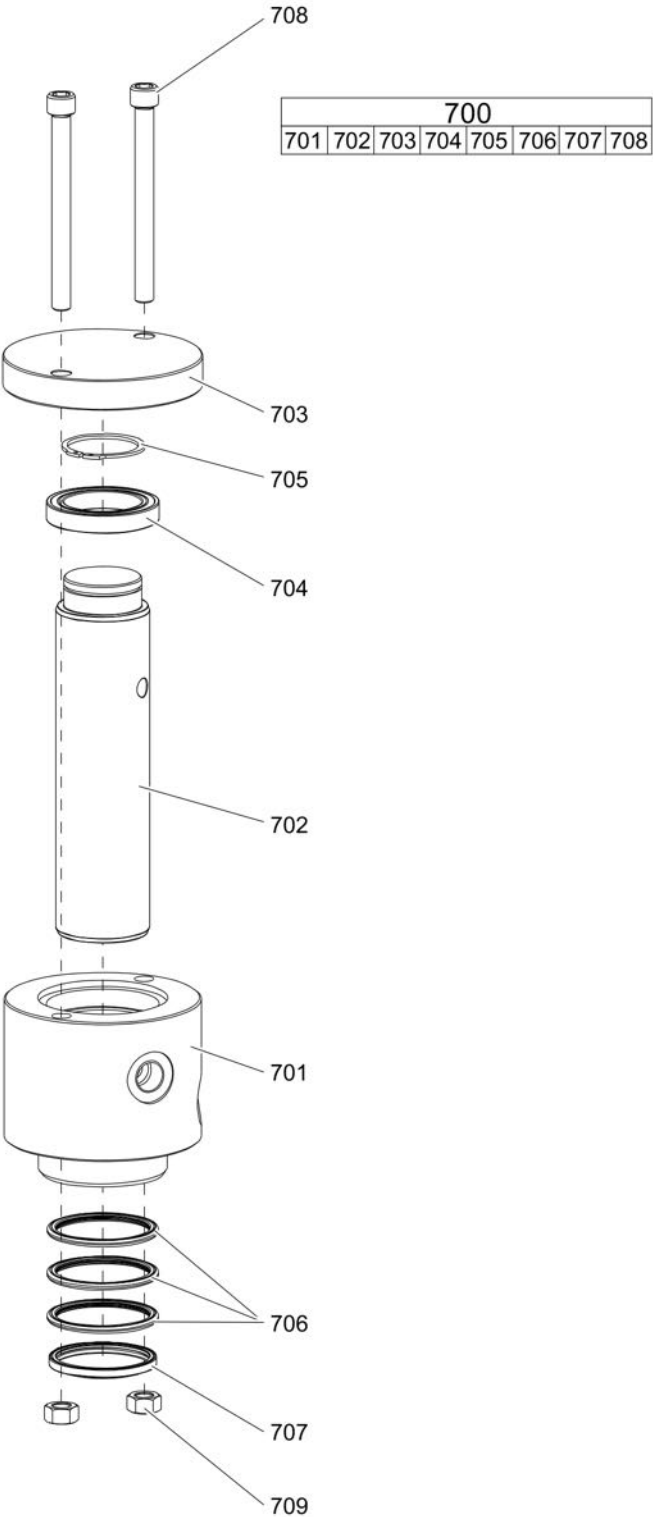
Fri Aug 16 07:05:40 UTC 2019

Item	Part No.	Name	Qty	L
600	3363123316	Upper part	1	
602	3363124275	Hydraulic motor	2	
605	3376520023	Fitting	2	
606	3376100874	Plug	2	
607	3376683061	Pinion	2	
608	3371803718	Fitting	2	
609	0606000057	ADAPTER	2	
611	3376100872	Fitting	6	
612	3376100895	Fitting	2	
613	3376560020	Fitting	2	
614	3376100873	Plug	2	
615	3371805711	Nipple, 1/2 in. BSP	2	
616	3361850596	Pair of lock washers	8	
617	5541063400	Allen screw	8	
618	3376100904	Hydraulic hose	2	
619	3376100903	Hydraulic hose	2	
620	3376100902	Hydraulic hose	2	
621	3362328082	Washer	2	
622	3360103750	Allen screw	2	
700	3363122002	Rotary transmission	1	A

Comments for Page: Upper part

A | see separate chapter

Mechanical Rotary transmission



Item	Part No.	Name	Qty	L
700(701-708)	3363122002	Rotary transmission	1	
701	3363123317	Stator	1	
702	3363123335	Rotor	1	
703	3363123321	Cover	1	
704	3376100862	Bearing	1	
705	0335114500	CIRCLIP	1	
706	3376100865	Seal	3	
707	3376100851	Seal	1	
708	3371818702	Allen screw	2	
709		Hexagon nut	2	A

Comments for Page: Rotary transmission

A | as transportation safety device

Mechanical Tigthening torques

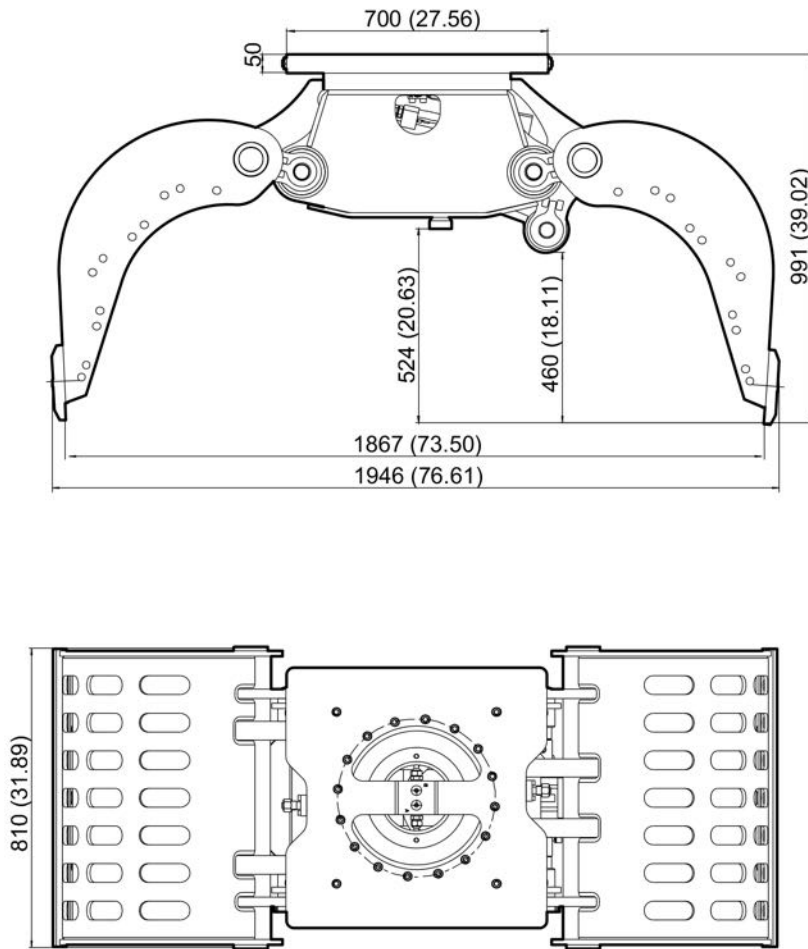
NO EXPLODED VIEW  
AVAILABLE  
FOR THIS BOM

Item	Part No.	Name	Qty	L
19	-	Allen screw - 170 + 15 Nm (125 + 11 ft lbf)		
21	-	Allen screw - 44 + 5 Nm (32 + 4 ft lbf)		
31	-	Plug - 19 + 5 Nm (14 + 4 ft lbf)		
69	-	Allen screw - 190 + 20 Nm (140 + 15 ft lbf)		
71	-	Allen screw - 70 + 10 Nm (52 + 7 ft lbf)		
79	-	Allen screw - 190 + 20 Nm (140 + 15 ft lbf)		
103	-	Grease nipple - 8 + 2 Nm (6 + 1 ft lbf)		
125	-	Allen screw - 75 + 10 Nm (55 + 7 ft lbf)		
127	-	Grease nipple - 8 + 2 Nm (6 + 1 ft lbf)		
154	-	Grease nipple - 8 + 2 Nm (6 + 1 ft lbf)		
213	-	Grease nipple - 8 + 2 Nm (6 + 1 ft lbf)		
412	-	Hexagon socket countersunk head screw - 530 + 30 Nm (391 + 22 ft lbf)		
617	-	Allen screw - 110 + 25 Nm (81 + 18 ft lbf)		
622	-	Allen screw - 70 + 10 Nm (52 + 7 ft lbf)		A
708	-	Allen screw - 110 + 25 Nm (81 + 18 ft lbf)		

Comments for Page: Tightening torques

A | secure with Loctite 243

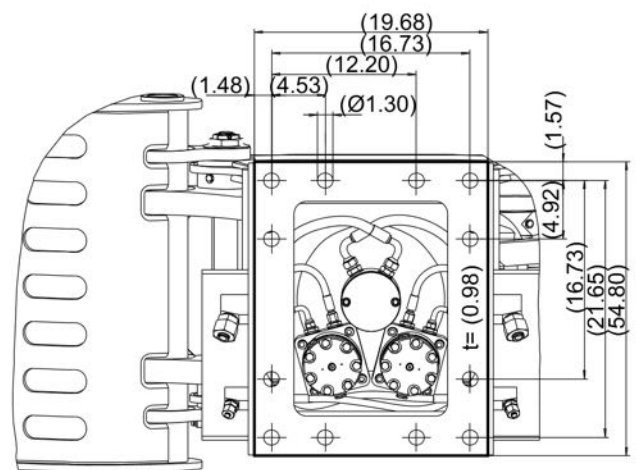
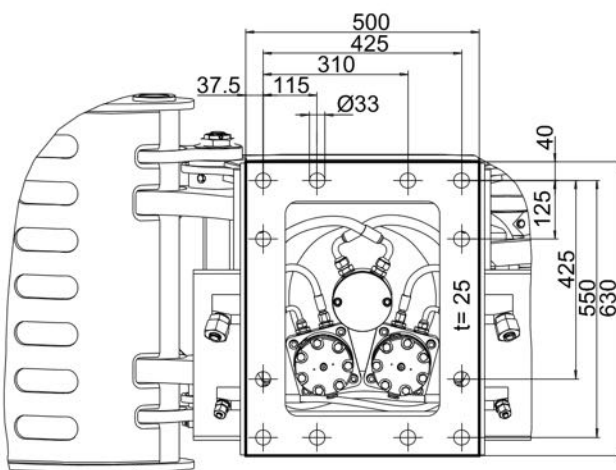
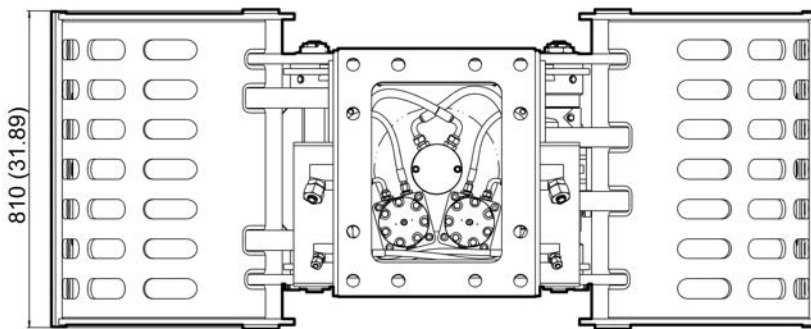
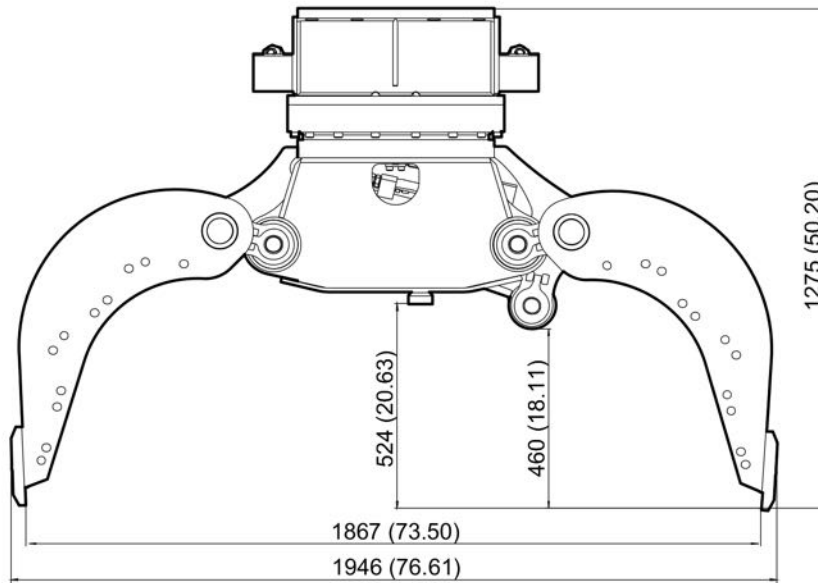
## Mechanical Dimensions MG 1000 N/R





This page intentionally left blank

## Mechanical Dimensions MG 1000 R

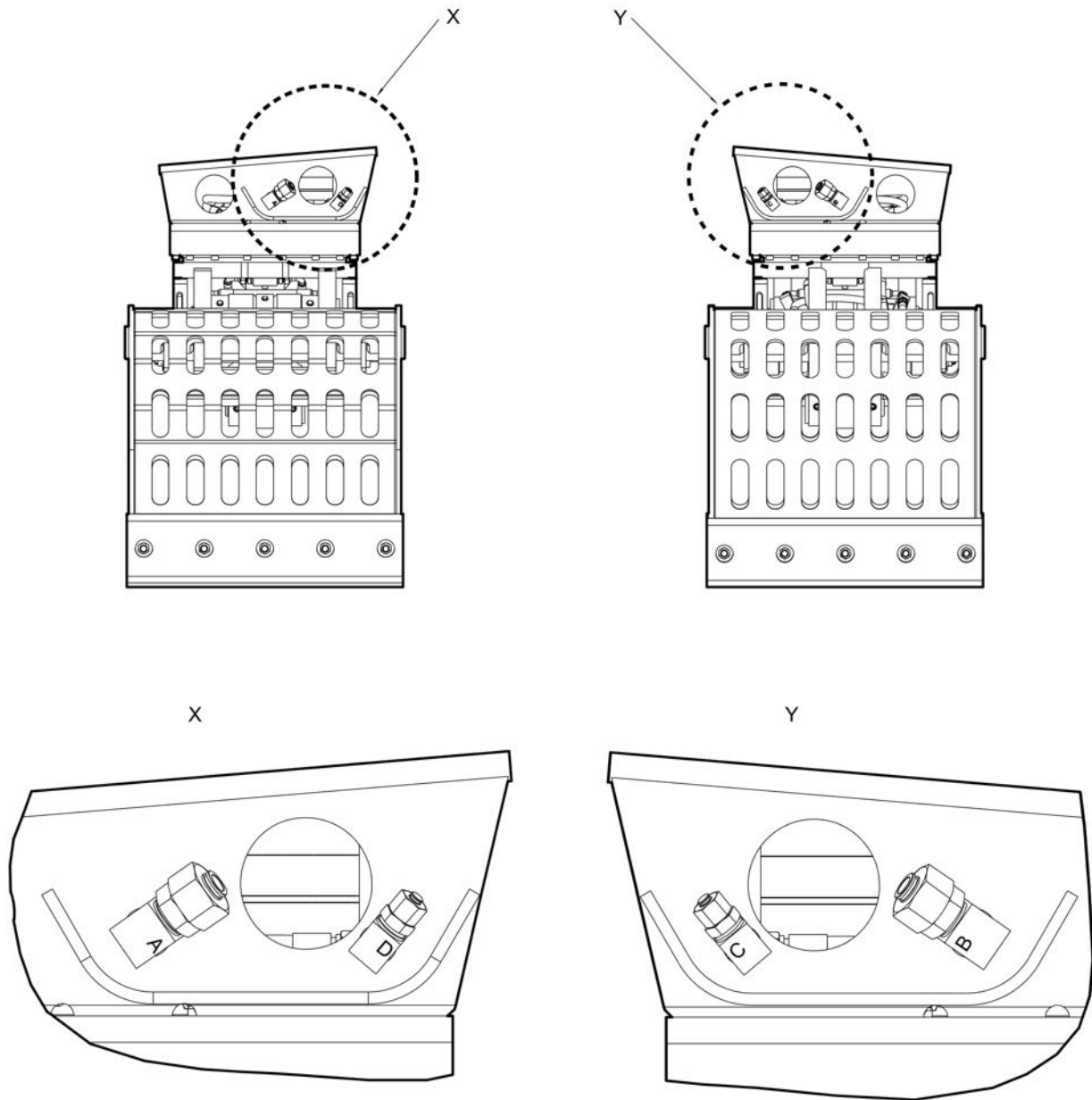


Refer to the DocMine web page for most up-to-date information. The printed information might be outdated.

Fri Aug 16 07:05:45 UTC 2019

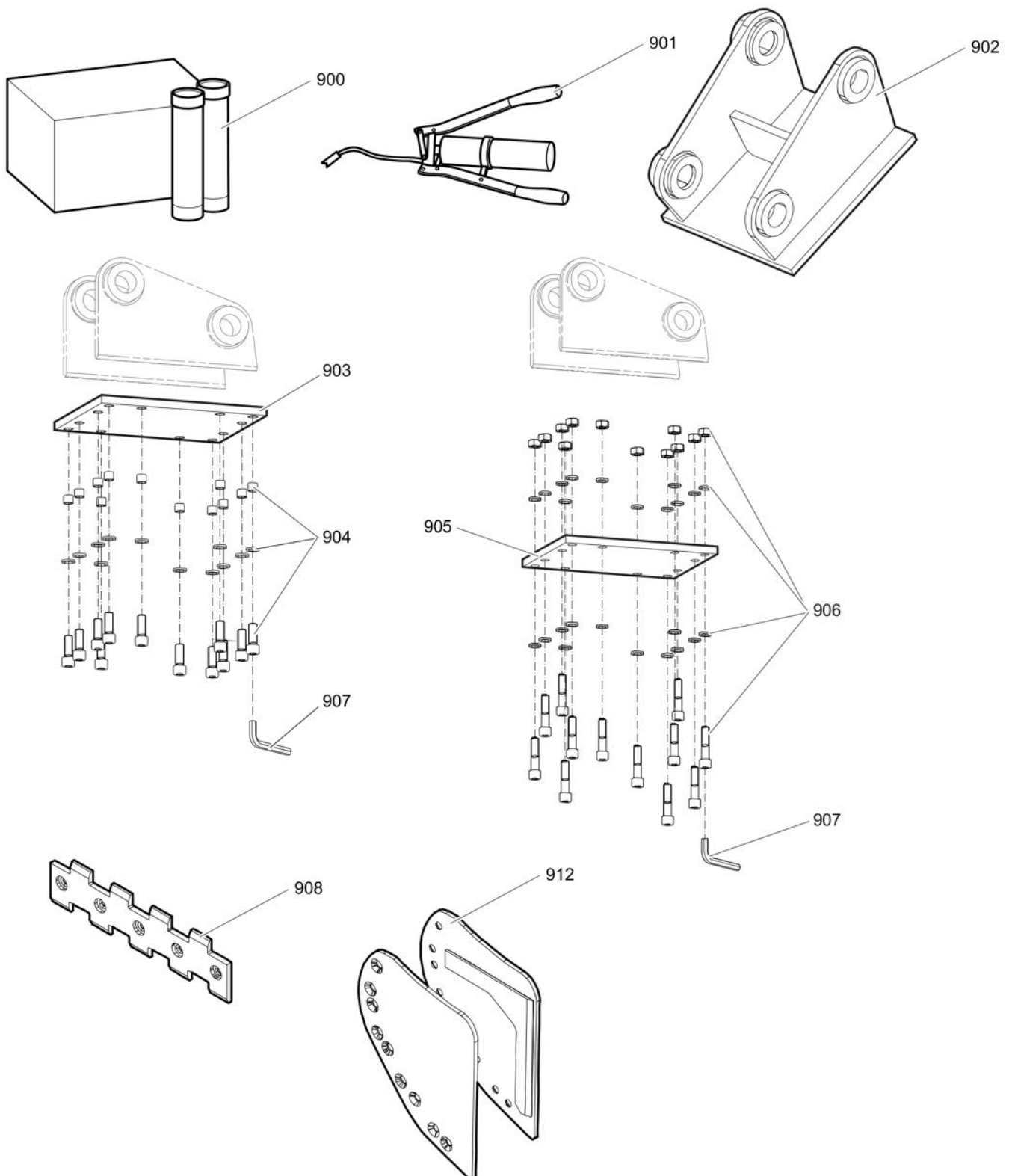
This page intentionally left blank

## Options / accessories Hydraulic ports, hydraulic hoses



Item	Part No.	Name	Qty	L
Not Shown	-	Open - Close		
-	3360332294	Hydraulic hose, I.D. 20 (0.79 in.), both ends M36 x 2 mm conical seal 24°, length 2,300 mm (90.5 in.)	2	
-	3363085947	Hydraulic hose, I.D. 20 (0.79 in.), both ends M36 x 2 mm conical seal 24°, length 2,800 mm (110.2 in.)	2	
Not Shown	-	Rotation		
-	3363031767	Hydraulic hose, I.D. 8 (3/8"), both ends M20 x 1.5 conical seal 24°, length 2800 mm (110 in.)	2	
-	3363034399	Hydraulic hose, I.D. 8 (3/8"), both ends M20 x 1.5 conical seal 24°, length 3500 mm (138 in.)	2	

## Options / accessories Optional equipment



Refer to the DocMine web page for most up-to-date information. The printed information might be outdated.

Fri Aug 16 07:05:47 UTC 2019

Item	Part No.	Name	Qty	L
900	3363094914	Cutter grease cartridge, 12 x 400 g (0.88 lbs)	1	
901	0909107100	LUBRICAT.GUN	1	
902		Adapter plate matching the carrier. Consult the authorized Customer Center/Dealer in your area.	1	
903	3363099799	Base plate with threaded inserts	1	
904	3363123470	Bolt kit	1	
905	3363100697	Base plate with through borings	1	
906	3363094579	Bolt kit	1	
907	3360209445	Allen key (22 mm)	1	
908(909-911)	3376682105	Tooth blades kit	1	
909		Tooth blade	2	
910		Hexagon socket countersunk head screw M20 x 50 mm 10.9	10	
911		Hexagon nut	10	
912(913-916)	3376683106	Side closing plates kit	1	
913		Side closing plate	2	
914		Side closing plate	2	
915		Hexagon socket countersunk head screw M20 x 50 mm 10.9	24	
916		Lock nut, M20 10.9	24	

Any unauthorized use or copying of the contents or any part thereof is prohibited.  
This applies in particular to trademarks, model denominations, part numbers, and drawings.